



義聯集團
E UNITED GROUP

創新 · 成長 · 責任 · 永續

INNOVATION · GROWTH · RESPONSIBILITY · CONTINUITY

目錄

- 02 | 創辦人的話
Words From The Founder
- 04 | 集團大事紀
Milestones



06 生產事業體 MANUFACTURING

- 08 | 燁輝企業股份有限公司
Yieh Phui Enterprise Co., Ltd.
- 10 | 燁輝(中國)科技材料有限公司
Yieh Phui (China) Technomaterial Co., Ltd.
- 12 | 鑫陽鋼鐵股份有限公司
Shin Yang Steel Co., Ltd
- 14 | 燁聯鋼鐵股份有限公司
Yieh United Steel Corp.
- 16 | 鞍鋼聯眾(廣州)不銹鋼有限公司
Angang Lian Zhong Stainless Steel Corp.
- 18 | 燁興企業股份有限公司
Yieh Hsing Enterprise Co., Ltd.
- 20 | 燁茂實業股份有限公司
Yieh Mau Corp.
- 22 | 福建聯德企業有限公司
Fujian Lian De Enterprise Co., Ltd.
- 24 | 福建聯維物流有限公司
Fujian Lian Wei Logistics Co., Ltd.



26 教育事業體 EDUCATION

- 28 | 義守大學
I-Shou University
- 30 | 義大國際高級中學
I-Shou International School



32 醫療事業體 MEDICAL SERVICES & HEALTH CARE

- 34 | 義大醫院
E-DA Hospital
- 36 | 義大癌治療醫院
E-DA Cancer Hospital
- 38 | 義大大昌醫院
E-DA DaChang Hospital
- 40 | 屏東義大醫院
Pingtung E-DA Hospital
- 42 | 義大護理之家
E-DA Nursing Home
- 44 | 義大產後護理之家
E-DA Postpartum and Babycare Center
- 46 | 義大貝思諾產後護理之家
E-DA Bassinet Mother and Baby Care Center



48 地產及休閒事業體 REAL ESTATE & LEISURE BUSINESS

- 50 | 義大皇家酒店
E-DA Royal Hotel
- 52 | 義大天悅飯店
E-DA Skylark Hotel
- 54 | 義大世界購物廣場
E-DA Outlet Mall
- 56 | 義大遊樂世界
E-DA Theme Park
- 58 | 高雄萬豪酒店
Kaohsiung Marriott Hotel
- 60 | 義享時尚廣場
E SKY Mall
- 62 | 泛喬股份有限公司
Eliter International Corp.
- 64 | 未來展望
Prospects

歷經一番的洗鍊才能展出耀眼的光輝
積極的向前邁進才能嘗到甜美的果實
創新、成長、責任、永續是我們遵循的方向
堅持做到最好是我們唯一的原則
一步一腳印與您一同成長

Smelting and polishing produces glaring shine.

Active steps ahead promise us the fruitful results.

Innovation, growth, responsibility and continuity are our guiding posts.

Commitment to the best is our only principle.

Step by step forward; grow for your need.



義联集團 自 1978 年首創燁興公司迄今，係不斷追求卓越歷程，隨著事業發展的軌跡，已從鋼鐵基礎產業發展至教育事業，並跨足醫療體系及地產休閒娛樂事業，展現企業「取之於社會，用之於社會」的回饋精神。期間雖歷經艱辛，但仍秉持著「創新、成長、責任、永續」的經營理念，迎接挑戰，淬煉出嶄新的格局。

隨著四大事業體的發展，義联集團已完整建構教、用、養、樂一生的照護體系。

- **幼有所教**：教育事業能培養社會所需的人才。
- **壯有所用**：生產事業能提供安身立命的工作環境。
- **老有所養**：醫療事業能照護平安健康的晚年。
- **民有所樂**：地產休閒娛樂事業能創造無限價值的優質生活。

滿懷感恩的心，義联集團一本創業的初衷，仍不斷的投資與建設台灣，以造福廣大民衆為主軸，回饋鄉親長期以來對本集團的愛護與支持。

義联集團關心您，也願意伴您一生！

E United Group

Starting from the establishment of Yieh Hsing Enterprise in 1978, E United Group (EUG) has been continuously pursuing a journey of excellence. On the path of business development, EUG has expanded its core business from the steel industry to the education, the medical care service as well as the real estate and leisure business.

This demonstrates the main goal of EUG, being a social enterprise and contributing to the society.

Having overcome obstacles, EUG is able to maintain its business philosophy of innovation, growth, responsibility, and continuity. Today, we are well prepared to face challenges and make innovative breakthroughs. With the construction of the four sectors, EUG is committed to providing a life-time service as follows:

- **Learning**: we deliver high-quality education to nurture individuals and benefit the society.
- **Employment**: our manufacturing business provides employment and career development opportunities for talented individuals.
- **Healthcare**: our healthcare sector ensures the elderly stay healthy and have a happy life.
- **Entertainment**: our leisure business creates a high-quality of life, possessing infinite value.

E United Group keeps its investment and construction in Taiwan ever since its establishment. We appreciate and always give back to this land and people as a return to all the supports.

E United Group cares for you, and will be your life-time companion.

創辦人 **林義守**

Founder *Lin I Shou*

集團大事紀
Milestones

1978/07	創立燁興企業股份有限公司。 Yieh Hsing Enterprise Co., Ltd., was established.
1985/12	教育部核准設校高雄工學院，校址位於台灣高雄市大樹區觀音山。 The Ministry of Education (MOE) approved the establishment of Kaohsiung Polytechnic Institute in Dashu District, Kaohsiung, Taiwan.
1986/03	原國喬企業股份有限公司更名為「燁輝企業股份有限公司」。 Kuo Chiao Enterprise Co., Ltd. was renamed as "Yieh Phui Enterprise Co., Ltd."
1988/03	燁茂實業股份有限公司設立。 Yieh Mau Corporation was established.
1988/10	燁興股票公開發行正式上市。 Yieh Hsing had its common stock listed on Taiwan Stock Exchange.
1988/12	燁聯鋼鐵股份有限公司設立。 Yieh United Steel Corporation (YUSCO) was established.
1989/11	聯統鋼鐵股份有限公司設立。 Lien Tong Steel Co., Ltd. was established.
1990/05	高雄工學院奉教育部核准參加 79 年度大學聯合招生。 Kaohsiung Polytechnic Institute was approved by MOE to enroll students via the Joint College Entrance Examination.
1991/12	聯統鋼鐵股份有限公司更名為「聯綱重工股份有限公司」。 Lien Tong Steel Co., Ltd. was renamed as "Lien Kang Heavy Industrial Co., Ltd."
1992/01	燁隆集團成立。 Yieh Loong Group was established.
1994/07	慈恩醫院向衛生署申請設立（急性一般 800 床、特殊 127 床、精神科 20 床、慢性復健 400 床）。 Application was submitted to Department of Health (DOH) for establishing Chi-An Hospital (800 acute general beds, 127 special beds, 20 psychiatry beds and 400 rehabilitation beds).

1978-2004

1995/03	燁輝股票上市案經台灣證券交易所股份有限公司審核通過。 Yieh Phui was approved for Listing by the Taiwan Stock.
1997/08	教育部核准高雄工學院改制為「義守大學」。 MOE approved "Kaohsiung Polytechnic Institute" to be renamed as "I-Shou University."
2000/02	集團更名為「燁聯集團」。 Yieh Loog Group was officially renamed as "Yieh United Group."
2000/07	衛生署同意慈恩醫院更名為「財團法人義大醫院」。 Chi-An Hospital was approved by DOH to be renamed as "E-DA Hospital."
2000/09	山海觀建設股份有限公司名稱變更為「泛喬股份有限公司」。 Formosa Construction Corp. was officially renamed as "Eliter International Corp."
2000/09	衛生署正式核發義大醫院建院許可（急性一般病床 500 床及護理之家 500 床）。 E-DA Hospital was granted an Establishment Permit by DOH.
2001/12	大陸聯衆（廣州）不銹鋼有限公司核准設立。 The construction of Lianzhong Stainless Steel Corporation was approved.
2002/01	大陸「常熟欣瑞科技材料有限公司」核准設立。 The construction of "Changshu Sino Leading Technomaterial Co., Ltd." in China was approved.
2003/03	集團更名為「義联集團」。 Yieh United Group was officially renamed as "E United Group."
2004/01	義大國際中小學校准立案 I-Shou International School was approved for its establishment.
2004/04	義大醫院正式營運。 E-DA Hospital officially began operation.
2004/08	義大醫院通過區域教學醫院暨乙類教學醫院評鑑。 E-DA Hospital was qualified as a teaching hospital.

2005-2010

2005/11	冠霖投資開發股份有限公司更名為「義大開發股份有限公司」。 Kun Lin Investment Development Co., Ltd. was renamed as "E-DA Development Corp."
2006/09	義守大學設立「義守大學燕巢分部」。 Yanchao Campus of I-Shou University was inaugurated.
2006/10	常熟欣瑞科技材料有限公司更名為「燁輝（中國）科技材料有限公司」。 Changshu Sino Leading Technomaterial Co., Ltd. was renamed as "Yieh Phui (China) Technomaterial Co., Ltd."
2006/12	義大醫院成功完成首例肝臟、腎臟移植。 E-DA Hospital successfully completed the first case of liver and kidney transplantation.
2007/06	燁輝企業取得有害物質流程管理之 QC 080000 IECQ HSPM 國際證書，成為全球首家取得符合歐盟 RoHS 環保指令管理系統認證之鋼鐵公司。 Yieh Phui obtained QC 080000 IECQ HSPM International Certificate, making it the first steel company worldwide in compliance with the management system for EU RoHS Directive.
2007/08	教育部核准義大國際中小學改制為「義大國際高級中學」。 I-Shou International School was approved for high school enrollment.
2007/10	天悅大酒店股份有限公司設立。 E-DA Skylark Hotel Corporation was established.
2008/03	燁輝企業榮獲 2008 年康健雜誌樂活企業選拔最佳潛力企業獎。 Yieh Phui received the potential company of "2008 Happy & Health (LOHAS) Company Award" from Common Health, a renowned magazine in Taiwan.
2008/04	義大皇家酒店股份有限公司設立。 Crowne Plaza Kaohsiung E-DA world was established.
2009/04	國際癌症專科醫院設置申請計畫書送衛生局申請。 Application was submitted to DOH for establishment of International Cancer Specialist Hospital.
2009/12	義大世界第一大規模舉辦跨年晚會。 New Year's Countdown Party was held for the first time in E-DA World.

2010/03	燁輝企業榮獲日本 JIPM 協會頒發 TPM 特別獎。 Yieh Phui was awarded the "Special Award for TPM Achievement" by Japan Institute of Plant Maintenance (JIPM).
2010/04	衛生署醫審會審查通過國際癌症專科醫院設置（一般急性病床 400 床及國際醫療病床 40 床）。 International Cancer Specialist Hospital was approved by DOH (400 acute beds and 40 international beds).
2010/05	國際癌症專科醫院更名為「義大癌治療醫院」。 International Cancer Specialist Hospital was renamed as "E-DA Cancer Hospital."
2010/06	燁聯通過日本 JIS MARK 認證。 YUSCO was certified by JIS MARK, Japan.
2010/06	高雄義大皇冠假日飯店榮獲觀光局頒發 5 星評鑑勳章。 Crowne Plaza Kaohsiung E-DA World was awarded 5 stars from Taiwan Tourism Bureau (a new hotel rating system in Taiwan).
2010/11	義大國際高中榮獲教育部高中校務評鑑一等獎章。 I-Shou International School was evaluated as an A Level school by MOE.
2010/12	燁輝取得國內鋼鐵業鍛烤鋼捲之第一張產品碳足跡及第三類產品環境宣告查證聲明書。 Yieh Phui obtained verifications of "Carbon Footprint" and "Environmental Product Declarations," becoming the pioneer among domestic steel competitors.
2010/12	燁聯通過「碳足跡」以及「溫室氣體盤查」雙認證。 YUSCO was approved by "Carbon Footprint" and "Greenhouse Gas Inventory."
2010/12	高雄義大皇冠假日飯店、義大天悅飯店、義大世界購物廣場及義大遊樂世界正式開幕。 E-DA World containing Crowne Plaza, Skylark Hotel, E-DA Outlet Mall and E-DA Theme Park was officially opened.

2011-2016

2011/02	福建聯德企業有限公司設立。 Fujian Lian De Enterprise Co., Ltd. was established.
2011/03	鑫陽鋼鐵成立，係燁輝企業基於全球鋼管市場發展策略考量而將鋼管事業部獨立，為燁輝企業 100% 轉投資之子公司，並於同年 5 月正式生產營運。 In light of the development strategies in the global steel pipe market, Yieh Phui spun off its pipe business into an independent company-Shin Yang Steel Co., Ltd. and fully owned its shares in March 2011, also the first pipe of SHIN YANG was manufactured in May, the same year.
2011/06	福建聯維物流有限公司設立。 Fujian Lian Wei Logistics Co., Ltd. was established.
2011/07	燁輝企業以「燁輝」為品牌，榮獲經濟部在建國百年舉辦之「台灣百大品牌」。 Yieh Phui was awarded the Top 100 Taiwan Brands by the Ministry of Economic Affairs (MOEA).
2011/09	高雄義大皇冠假日飯店正式獲得世界旅遊大賞 World Travel Award 2011「臺灣最佳城市渡假飯店」與「臺灣最佳會議型飯店」雙項大獎。 Crowne Plaza Kaohsiung E-DA World won 2 awards "Best City Resort in Taiwan" and "Best Conference Hotel in Taiwan" at World Travel Award 2011.
2011/12	義守大學全數通過高等教育評鑑中心，100 學年度大學校務評鑑五大評鑑指標，為教育部認可之辦學績優大學。 I-Shou University passed the five evaluation indicators for the Institutional Accreditation conducted by the Higher Education Evaluation & Accreditation Council of Taiwan in Academic Year 2011, and I-Shou University was recognized as an excellent university by MOE.
2012/02	Cheers 雜誌報導義守大學在「大陸交換生」、「赴大陸交換學生數」與「跨國雙聯學位數」等三項國際化指標，皆位居全國私立大學第一。 According to the survey results announced by Cheers Magazine, I-Shou University was at the top of the list in terms of "Number of Mainland Chinese Exchange Students," "Number of Exchange Students to Mainland China" and "Number of International Double Degree Programs."

2012/05	義大國際高中完整通過 IB 國際文憑組織 DP 高中教育課程、MYP 中學教育課程及 PYP 初等教育課程，成為 IB 世界學校。 I-Shou International School has become an International Baccalaureate (IB) World School offering 3 IB programmes: PYP, MYP, and DP.
2012/12	燁輝企業通過財政部關務署『臺灣安全認證優質企業 (TWAEQ)』認證。 Yieh Phui was certified with "TWAEQ" (Taiwan Authorized Economic Operator) by Customs Administration, the Ministry of Finance, Taiwan.
2013/01	義大職棒事業股份有限公司設立。 E-DA Pro. Baseball Corporation was established.
2013/08	義守大學醫學院奉教育部核准正式成立。 I-Shou University obtained approval from MOE to establish the College of Medicine.
2014/01	高雄義大皇冠假日飯店復名為「義大皇家酒店」。 Crowne Plaza Kaohsiung E-DA World was renamed as "E-DA Royal Hotel."
2014/10	聯衆（廣州）與鞍鋼集團策略聯盟，鞍鋼入資聯衆 60% 股權，公司更名為「鞍鋼聯衆（廣州）不銹鋼有限公司」。 Lianzhong Stainless Steel Corporation (LISCO) was in alliance with Ansteel Group Corporation, who acquired 60% shares of LISCO. LISCO was officially renamed as "Angang Lianzhong Stainless Steel Corporation."
2015/09	義大癌治療醫院正式營運。 E-DA Cancer Hospital officially began operation.
2016/02	義守大學管理、國際、觀餐為全球唯一同時三學院同時通過 AACSB 國際商管教育認證，躍身全球前 5% 頂尖商管認證的名校。 The College of Management, the International College, and the College of Tourism and Hospitality of I-Shou University earned the AACSB accreditation with one review visit, making it ranked among the top 5% of more than 16,000 schools worldwide granting business degrees.
2016/04	高雄義大皇家酒店榮獲觀光局頒發 5 星評鑑勳章。 E-DA Royal Hotel was awarded 5 stars from Taiwan Tourism Bureau (a new hotel rating system in Taiwan).

2016-2023

2016/09	義守大學自 2016 年起，連續 3 年登榜英國《泰晤士報》全球最佳大學、亞洲最佳大學、新興經濟體最佳大學，躋身全球約 5 萬所大學的前 2%。 According to the Times Higher Education (THE) World University Rankings, THE Asia University Rankings, and THE Emerging Economies University Rankings 2016-2019, I-Shou University was ranked one of the world's top 1000 universities.
2016/10	義大大昌醫院正式營運。 E-DA DaChang Hospital officially began operation.
2016/10	義大職棒犀牛隊榮獲中華職棒總冠軍。 E-DA Rhinos clinched the 2016 CPBL championship.
2018/01	燁聯榮獲 TPM 優秀繼續賞之國際大賞殊榮。 Yieh United Steel Corporation achieved the Award for Excellence in Consistent TPM Commitment.
2019/07	義守大學入選《遠見雜誌》台灣最佳大學排行榜，全國綜合大學前 20 名，南部私校第一。 According to top universities in Taiwan as ranked by Global Views Monthly, I-Shou University was ranked one of the best universities locally, the top 20 comprehensive universities nationally, and the best private university in the South.
2019/08	義守大學獲教育部核准成立「醫學系」。 I-Shou University was approved by MOE to establish the School of Medicine.
2019/11	義大國際高中榮獲高中教育部評鑑一等獎。 I-Shou International School was awarded High School Evaluation A+ by MOE.
2020/01	燁興取得日本 JIPM 優秀賞之殊榮。 Yieh Hsing honorably obtained "Award for TPM Excellence" by JIPM.
2020/12	朕豪大酒店試營運。 Soft opening of Great Emperor Hotel.

2021/03	義享時尚廣場開市營運。 E Sky Mall Soft Opening was held.
2021/03	朕豪大酒店加盟萬豪酒店集團，更名為高雄萬豪酒店，並於 3/28 起正式營運。 Great Emperor Hotel has joined Marriott International and rebranded as Kaohsiung Marriott Hotel in March 2021. March 28th marks the official commencement of operations for the Hotel.
2021/04	屏東義大醫院正式取得衛福部設立許可。 Pingtung E-DA Hospital obtained a grant of the Establishment Permit from the Ministry of Health and Welfare.
2021/04	燁聯取得印度「利用鎳、鉻礦生產沃斯田鐵系不銹鋼的方法」專利。 Yieh United Steel Corporation obtained an Indian patent for the method of using Nichrome ore to produce austenitic stainless steels.
2021/08	依 AACSB 規定，相隔五年後的 2021 年，義守大學管理、國際、觀餐三學院再次接受 AACSB 評鑑，並通過「國際商管教育持續精進 CIR 認證」，始終如一的教學品質，成就「臺灣之光」。 The College of Management, the International College, and the College of Tourism & Hospitality of I-Shou University passed the AACSB CIR (Continuous Improvement Review) five years after the initial accreditation, indicating the excellent quality of the business education offered by I-Shou University.
2021/11	義大世界購物廣場榮獲工商時報「臺灣服務業大評鑑」金獎。 E-DA Outlet Mall received a gold award from Commercial Times, a prestigious Taiwan financial newspaper, at the 2021 Taiwan Service Awards.
2022/01	燁輝取得日本 JIPM 之「TPM 世界級賞 (Award for World-Class TPM Achievement, 2021)」。 Yieh Phui honorably obtained "Award for World-Class TPM Achievement, 2021" by JIPM.
2022/10	燁輝榮獲經濟部 2022 年度「金質獎」金屬類最佳貿易貢獻獎，為鋼鐵產業唯一獲獎企業。 Yieh Phui, the only award-winning enterprise among local steel companies, won the 2022 International Trade Awards for the Outstanding Trade Contributions in the metal industry, held by the Ministry of Economy.
2023/07	義大世界購物廣場獲得 2023 年台灣服務業大評鑑金牌大賞。 E-DA Outlet Mall awarded Gold Medal in the Best Service in Taiwan 2023.



生產事業體 MANUFACTURING



鋼鐵產業係義聯集團的核心事業，以致力於新產品研發及節能減碳的綠色產業為宗旨，並藉由技術創新能力的提升，以強化各項產品的價值，除提供客戶更好的服務外，並善盡企業社會責任達到永續經營為目的。未來朝向上中下游產業鏈的垂直整合以積極佈局全球、建構更堅實的營運體系及創造世界級的競爭優勢，是生產事業體的目標願景。

Steel industry is the core business of E United Group. We are devoted to developing new products and view carbon emissions reduction as our mission. By improving the technical innovation capability, the value of our products can be strengthened. We also provide better customer service and promote corporate social responsibility in order to achieve the sustainable development. In the future we will strive for vertical integration. Realizing global business strategy, constructing a solid business operating system and creating world-class competitive advantages are the visions and goals for our manufacturing sector.



- 燁輝企業股份有限公司
Yieh Phui Enterprise Co., Ltd.
- 燁輝(中國)科技材料有限公司
Yieh Phui (China) Technomaterial Co., Ltd.
- 鑫陽鋼鐵股份有限公司
Shin Yang Steel Co., Ltd.
- 燁聯鋼鐵股份有限公司
Yieh United Steel Corp.
- 鞍鋼聯眾(廣州)不銹鋼有限公司
Angang Lian Zhong Stainless Steel Corp.
- 燁興企業股份有限公司
Yieh Hsing Enterprise Co., Ltd.
- 燁茂實業股份有限公司
Yieh Mau Corp.
- 福建聯德企業有限公司
Fujian Lian De Enterprise Co., Ltd.
- 福建聯維物流有限公司
Fujian Lian Wei Logistics Co., Ltd.



設立日期	1986 年 3 月
員工人數	約 1,400 人
產線	酸洗線 2 條、往復式冷軋機 4 條、連續式熱浸鍍鋅線 4 條、連續式彩塗烤漆線 3 條
主要產品	酸洗鋼捲、冷軋全硬鋼捲、熱浸鍍鋅 / 鍍 5% 鋁鋅 / 鍍 55% 鋁鋅 / 鍍鋅鋁鎂鋼捲、太陽能發電系統支架專用高耐腐蝕型鋼材 - 光支彩、高效抗菌鋼捲、高效抗病毒鋼捲、烤漆鋼捲、鋼結構、運搬機械、天車設備

Date of Establishment	March, 1986
Number of Employees	approximately 1,400
Production Lines	2 Pickling Lines, 4 Reversing Cold Rolling Mills, 4 Continuous Hot-dip Galvanizing Lines, and 3 Continuous Coil Coating Lines
Main Products	Pickled Steel in Coil, As-Cold-Rolled Steel in Coil, Hot-Dip Zn/5% Al-Zn/55% Al-Zn/Zn-Al-Mg Coated Steel in Coil, High Corrosion Resistant Pre-Painted Hot-Dip Al-Zn/Zn-Al-Mg Coated Steel (Phuizer SolarKing) for Brackets for Solar Photovoltaic Power, Efficient PhuizerGreen® AMC Plus, ColorGreen AVC Plus®, Pre-Painted Steel in Coil, Steel Structures, and Crane Equipment

燁輝企業 自 1986 年創立以來，即朝生產及研發具環保、節能、耐用、壽命長及可回收之綠色環保鋼鐵產品方向發展，先後引進北美、歐洲及日本等先進國家之優良生產設備，可生產各式熱浸鍍鋅、鋁鋅、鋅鋁鎂與烤漆鋼捲，年產能超過 100 萬噸，產品廣泛使用於高階建材、3C 與家電產品之機殼與構件，以及太陽能光電支架等用途，種類最齊全、尺寸最完備、客戶服務最到位，可滿足客戶一次購足的需求，為台灣、中國大陸及東南亞地區最大、最具競爭力之專業鍍烤鋼廠。

2005 年經集團事業整併成立工程事業部，其中路竹廠可承接超高鋼骨大樓、大型廠房及橋樑等鋼結構之製造與安裝；燕巢廠可承製天車及運搬起重機械設備，為台灣具備設計能力及生產規模最大之一般及貨櫃起重機械製造廠。

燁輝產品中約有 70% 外銷全球 130 餘國，產品與服務均深受海內外客戶之肯定與讚揚，於 2011 年榮獲經濟部公開選拔之台灣百大品牌之殊榮；於 2022 年取得日本設備維護協會 (JIPM) 最高階之世界級賞 (Award for World-Class)，為鋼鐵業全球第二家及非日系鋼廠首家取得此獎項之鋼鐵公司。

Yieh Phui Enterprise Co., Ltd. (YP) established in 1986, has specialized in eco-friendly, energy conservation, durable, and recyclable green steel products. Our cutting-edge production facilities from North America, Europe, and Japan enable YP to provide a variety of metallic coated steel sheet finished products and bring the company's annual production to over one million metric tons. Our products are widely used for high-end building material, computer electronics and household appliances outer casing and components, and the brackets for solar photovoltaic power. By providing diverse products and one-stop shopping service to our customers, YP has become the most competitive independent coated steel sheet producer in Taiwan, China and Southeast Asia.

In 2005, YP established the Engineering Business Division via a merger. The Luzhu Plant specializes in manufacturing and installation of steel structure for skyscrapers, large plants and bridges. The Yanchao Plant has the ability to design and manufacture cranes, which is the largest crane producer in Taiwan.

As approximately 70% of YP's finished products are exported, all our customers, both domestic and international, have affirmed the value YP's exceptional quality and service. Owing to YP's excellent sales and prominent brand reputation, we received "Top 100 Taiwan Brand" in 2011 from the Ministry of Economic Affairs(MOEA). In addition, YP obtained the highest "Award for World-Class TPM Achievement" from Japan Institute of Plant Maintenance (JIPM) in 2022. We are the second one and the first non-Japanese steel mill to win this honor in the world.



烨辉(中国)科技材料有限公司
YIEH PHUI (CHINA) TECHNOMATERIAL CO., LTD.



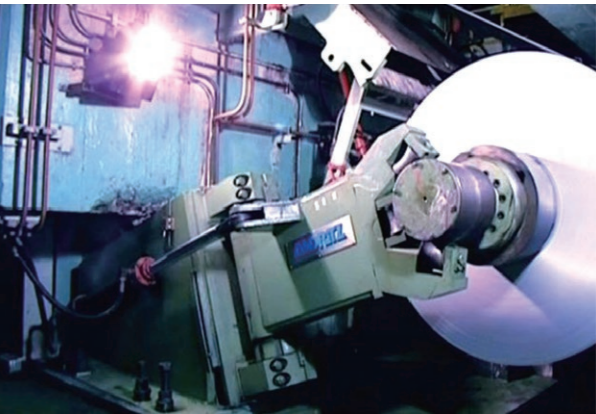
設立日期	2002 年 01 月
土地面積	33 萬平方米
員工人數	約 1,450 人
產線	酸洗線 1 條、往復式冷軋機 2 條、酸連軋線 1 條、冷軋連續退火線 1 條、連續式熱浸鍍鋅線 4 條、連續式彩塗烤漆線 3 條
主要產品	酸洗鋼捲、冷軋全硬鋼捲、冷軋退火鋼捲、熱浸鍍鋅 / 鍍鋅鋁鎂 / 鍍 55% 鋁鋅 / 鍍鋁鎂鋅鋼捲、高效抗菌鍍制鋼捲、彩塗烤漆鋼捲、印刷彩塗鋼捲、汽車用冷軋鋼捲與熱浸鍍鋅鋼捲、熱浸鍍鋁鋼捲

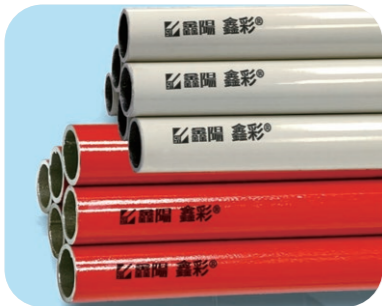
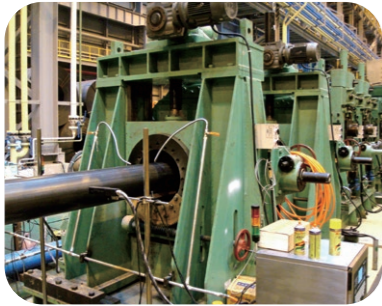
Date of Establishment	January, 2002
Land Area	330,000m ²
Number of Employees	approximately 1,450
Production Lines	1 Pickling Line, 2 Reversing Cold Rolling Mills, 1 Pickling and Tandem Cold Mill, 1 Annealing Line, 4 Continuous Hot-Dip Galvanizing Lines, 3 Continuous Coil Coating Lines

Main Products	Pickled Steel in Coil, As-Cold-Rolled Steel in Coil, Cold-Rolled Steel in Coil, Hot-Dip Zinc Coated Steel in Coil, Hot-Dip 5% Al-Zn-Mg Coated Steel in Coil, Hot-Dip 55% Al-Mg-Zn Coated Steel in Coil, Anti-Microbial AFP Treated Metallic Coated Steel in Coil, Pre-Painted Steel in Coil, Printed Pre-Painted Steel in Coil, Cold-Rolled Steel & Hot-Dip Zinc Coated Steel in Coils for Automotive Parts, Hot-Dip Aluminum Coated Steel in Coil
---------------	--

烨辉(中國) 科技材料有限公司 (以下簡稱烨辉(中國)) 位於中國大陸江蘇省常熟市，創立於 2002 年 1 月，由烨辉企業 100% 轉投資設立，作為烨辉企業在中國大陸之鍍烤（塗鍍）鋼品生產中心。烨辉(中國)自 2004 年底開始投產，目前擁有一條酸洗線、二座往復式冷軋機、一條酸連軋線、一條連退線、四條連續式熱浸鍍鋅線、三條連續式彩塗烤漆線，年產能鍍鋅與鍍鋁鋅鋼捲 130 萬噸、彩塗烤漆鋼捲 57 萬噸，為中國大陸市場上品質及知名度非常高的優質品牌之一。

Yieh Phui (China) Technomaterial Co., Ltd. (YP (China)) is located in Changshu City, Jiangsu Province, People's Republic of China. In January 2002, YP (China) was founded by Yieh Phui which holds 100% of the shares. YP (China) serves as a coated steel coil manufacturing center in Mainland China. The first coil was produced during commissioning of YP (China) at the end of 2004. Currently, YP (China, a leading brand in Chinese market), owns one pickling line, two reversing cold rolling mills, one pickling and tandem cold mill, one annealing line, four continuous hot-dip galvanizing lines and three continuous coil coating lines. The annual capacity of metallic coated steel coils is 1.3 million tons and that of prepainted steel coils is 0.57 million tons.





設立日期	2011 年 3 月
員工人數	約 360 人
產線	製管線 9 條、鋼管鍍鋅設備 1 套、鋼管塗裝線 4 條及其他鋼管加工設備如絞牙、滾溝、鋸切及縮管等
主要產品	API 石油套管及線管、黑鋼管、後熱浸鍍鋅鋼管、預熱浸鍍鋅 /5% 鋁鎂鋅鋼管 (鋁鑫鳳 ⁺)、圓管、方矩形管及橢圓管、鑫彩 [®] 系列環保 UV 光固化塗裝鋼管及環保水性防蝕塗料塗裝鋼管

Date of Establishment	March, 2011
Number of Employees	approximately 360
Production Lines	9 Pipe-Forming Lines, 1 Set of Pipe Hot-Dip Galvanizing Equipment, 4 Pipe Coating Lines, and Additional Equipment for Threading, Grooving, Cutting and Swaging Pipes
Main Products	API Casing and Line Pipes, Black Pipes, Post-Hot-Dip Galvanized Pipes, Pre-Galvanized Zn/5% Al-Mg-Zn Pipes (AMZcot [®]), Circular Pipes, Square and Rectangular Pipes, Oval Pipes, Eco-Friendly UV Coating, and Water-Based Anti-Corrosion Coating Pipes



鑫陽鋼鐵

是燁輝企業因應全球鋼管市場發展策略佈局所 100%轉投資公司，專營直縫碳鋼管之生產及銷售，其前身為燁興企業於 1978 年成立之鋼管製造廠。

目前鑫陽擁有九條製管生產線，可生產各式用途鋼管，包括石油用管、流體配管、消防、空調及電線用管、結構用管、道路工程用管、鷹架管、自動倉儲管、車體用管、農業用管、太陽能支架、熱交換器及冷凍用管等，並提供絞牙、滾溝、短尺鋸切及縮管等加工服務，可符合客戶省時、省工及一次購足的需求。為避免鋼管之生產與應用對環境造成傷害，鑫陽已開發出環保 UV 光固化與水性防蝕塗料之塗裝製程，可進一步提供耐用、美觀並且友善環境的鋼管製品，滿足高階市場之使用需求。

鑫陽鋼鐵建立有一套完整而嚴密的鋼管品質管理及服務系統，除獲得 ISO 9001、ISO 45001、ISO/IEC 17025 TAF(ILAC MRA) 實驗室認證及經濟部 CNS 8 項㊦字標記認證外，更取得美國 UL、FM 消防撒水管、美國石油協會 API 5L/5CT、歐盟 CE Mark、澳洲 ACRS、BSI AS/NZS 1163 及日本 JIS Mark 等多項國際認證。產品行銷海內、外，包括東南亞、美、加、紐、澳、日本及歐洲，也是中油、台電等公營事業所指定使用鋼管產品之合格供應商，產品品質及服務廣獲客戶好評。

In light of the development strategies in the global steel pipe market, Shin Yang Steel, a company fully owned by Yieh Phui Enterprise through reinvestment, specializes in the manufacturing and sales of welded carbon steel pipes. Shin Yang Steel traces its origins to the steel pipe mill established by Yieh Hsing Enterprise in 1978. At present, Shin Yang Steel operates nine pipe-forming lines adept at manufacturing a diverse range of pipes tailored for specific applications. These applications encompass petroleum drilling and conveyance, plumbing systems, fire sprinkler systems, HVAC (Heating, Ventilation and Air Conditioning), rigid steel conduit, structural components, road infrastructure, scaffolding, automated warehousing solutions, bus frame construction, greenhouse installations, forming services, solar panel support structures, heat exchange systems, refrigerant conduits, and beyond. Shin Yang Steel also offers threading, grooving, short-length tube cutting, and swaging services to meet customers' demands for efficiency in time and labor, as well as one-stop shopping convenience. In response to environmental concerns associated with pipe production and application, Shin Yang Steel has developed UV coating and water-based anti-corrosion coatings to enhance product durability, aesthetics, and eco-friendliness. This initiative ensures the satisfaction of high-end customers' needs.

Over the years, Shin Yang Steel has implemented comprehensive quality management systems, obtaining certificates such as ISO 9001, ISO 45001, ISO/IEC 17025 laboratory accreditation (TAF, ILAC MRA), and CNS Mark. Additionally, we have earned international certificates including UL & FM, API 5L & 5CT, CE Mark, ACRS, BSI AS/NZS 1163, and the JIS Mark. Shin Yang Steel's products are distributed globally, reaching markets in Southeast Asia, the United States, Canada, New Zealand, Australia, Japan, and Europe. Moreover, we are the designated supplier for esteemed public enterprises such as CPC Corporation and Taiwan Power Company. Shin Yang Steel's commitment to exceptional product quality and service has garnered high praise from our valued customers.



燁聯鋼鐵股份有限公司
YIEH UNITED STEEL CORP.



設立日期	1988 年 12 月
員工人數	約 2,800 人
產線	一貫作業不銹鋼廠，含煉鋼、熱軋、冷軋、精密加工
主要產品	不銹鋼：小鋼胚、熱軋鋼捲 / 鋼板、冷軋鋼捲 / 鋼板 / 分條、拋砂鋼捲 / 鋼板 / 分條 (No.4/ HL/SB)、鏡面鋼捲 / 鋼板 / 分條、和紋鋼捲 / 鋼板 / 分條、彩色不銹鋼鋼捲 / 鋼板 / 分條 碳鋼：扁鋼胚、小鋼胚、熱軋鋼捲 / 鋼板

Date of Establishment	December, 1988
Number of Employees	approximately 2,800
Production Lines	Integrated manufacturing processes include steel making, hot rolling, cold rolling and surface finishing
Main Products	Stainless Steel: Billet, Hot Rolled Coil / Plate, Cold Rolled Coil / Sheet / Strip, Polishing Coil / Sheet / Strip, Mirror Coil / Sheet / Strip, Vibration Coil / Sheet / Strip, Color coating Coil / Sheet / Strip Carbon Steel: Slab, Billet, Hot Rolled Steel coil/ Plate



燁聯鋼鐵 是台灣唯一擁有煉鋼、熱軋、冷軋並延伸至連續式精密加工之一貫作業全製程不銹鋼廠，同時朝產品多元化生產碳鋼。自 1988 年設立以來，持續投入先進設備與尖端技術，供應國內及全球各地尺寸完備、鋼種齊全之高品質、綠色環保不銹鋼及碳鋼產品。

在追求更新、更快、更好的目標下，煉鋼年產量已超越百萬噸，熱軋與冷軋年產量分別突破 95 萬噸及 70 萬，並通過 ISO 9001 品質、ISO 14001 環境、ISO 45001 職業安全衛生、ISO 50001 能源管理系統、ISO 14064-1 溫室氣體盤查等認證，也取得 JIS MARK 及 UL2809 再生料含量驗證等多項認證。

因應全球減碳趨勢，燁聯積極投資建置各式節能、減碳之設備及技術，規劃增設煉鋼節能環保電爐、改造熱軋加熱爐及持續興建太陽能光電系統，並進行產線智能化、自動化提高能源使用效率。煉鋼以短流程電爐製程，並採用高比例回收廢鋼為原料，符合「資源可持續回復，循環再生」的循環經濟趨勢。燁聯持續追求卓越精進及永續發展，以客戶未來對產品高值化、減碳之需求為導向，提供唯美、精密、環保、低碳的綠色鋼材與服務，將成為全球綠色供應鏈之標竿企業。

Yieh United Steel Corp. (YUSCO) stands as Taiwan's premier fully integrated stainless steel facility, boasting a comprehensive range of operations from steelmaking to hot and cold rolling, along with continuous precision processing. Since its establishment in 1988, YUSCO has remained steadfast in its commitment to invest in state-of-the-art technology to deliver top-tier stainless steel and diversified carbon steel products both domestically and globally.

With an annual steelmaking capacity exceeding one million tons, and hot and cold rolling capacities surpassing 950,000 tons and 700,000 tons respectively, YUSCO is unwavering in its dedication to innovation, efficiency, and excellence. The company holds a multitude of certifications, including ISO 9001 for quality, ISO 14001 for environmental management, ISO 45001 for occupational health and safety, ISO 50001 for energy management systems, ISO 14064-1 for greenhouse gas inventory, as well as JIS MARK and UL2809 for recycled content verification.

In response to the global imperative for carbon reduction, YUSCO is actively investing in energy-efficient and carbon-reducing equipment and technologies. Plans are underway to implement energy-efficient electric furnaces for steelmaking, enhance heating furnaces for hot rolling, and expand solar energy facilities. YUSCO's steelmaking process prioritizes short-flow electric furnaces processes and a significant proportion of recycled scrap steel as raw materials, aligning with the principles of resource sustainability and circular economy.

YUSCO maintains an unwavering commitment to excellence and sustainable development, aiming to meet the evolving demands of customers for high-value-added, carbon-reduced products. The company endeavors to provide aesthetically pleasing, precise, environmentally friendly, and low-carbon green steel materials and services, aspiring to set the standard as a benchmark enterprise in the global green supply chain.



鞍钢联众(广州)不锈钢有限公司

ANGANG LIANZHONG STAINLESS STEEL CORPORATION



設立日期	2001 年 12 月
土地面積	112 萬平方米
員工人數	約 2,000 人
產線	煉鋼、熱軋、冷軋一貫作業不銹鋼廠
主要產品	不銹鋼扁鋼胚、不銹鋼鋼板、熱軋不銹鋼黑皮鋼捲、熱軋不銹鋼鋼捲和冷軋不銹鋼鋼捲

Date of Establishment	December, 2001
Lot Area	1.12 million m ²
Number of Employees	approximately 2,000
Production Lines	Integrated manufacturing processes include steelmaking, hot rolling and cold rolling
Main Products	Stainless Slab, Stainless Plate, Stainless Black HRC, Stainless HRC, Stainless CRC

鞍鋼聯衆(廣州) 不銹鋼有限公司為燁聯與鞍鋼集團合資企業，位於廣州經濟技術開發區東區，占地面積 112 萬平方公尺，是煉鋼、熱軋、冷軋一貫作業不銹鋼廠，建設有世界上最先進的廢酸全回收再生系統及國內第一套可以處理高濃度硝酸鹽氮廢水的生化脫硝系統等各項資源回收利用和污染防治設施。所生產的鋼種遍及 200 系、300 系、400 系，產品廣泛用於化工、能源、食品、醫藥、紡織等工業領域及建築裝飾材料、汽車零部件、廚具刀具、家電等民生行業。鞍鋼聯衆已通過 ISO 9001、ISO 14001、ISO 45001、UL2809、IATF16949、PED、CNAS 等多項管理體系和產品國際認證，同時培育員工、激發組織創造力，致力建設最具競爭力的不銹鋼企業。

Angang Lianzhong Stainless Steel Corporation (AL), the joint venture of E United Group (EUG) and Ansteel Group, is located in the East Section of the Economy & Technology Development Zone in Guangzhou, China. Angang Lianzhong, which is located in an area of 1.12 million square meters, is an integrated stainless steel mill that operates steelmaking, hot rolling and cold rolling processes, it possesses the most advanced waste acid whole recovery and regeneration system and the country's first biochemical denitrification system, which can handle high-concentration nitrate nitrogen wastewater, and other resource recycling and pollution prevention facilities.

The stainless steel types that Angang Lianzhong produces include 200 series, 300 series and 400 series. The products are widely used in chemical, energy, food, medicine, textile, construction and decoration materials, auto parts, kitchen utensils and knives, home appliances and other livelihood industries.

Angang Lianzhong has passed various international management system and product certifications such as ISO 9001, ISO 14001, ISO 45001, UL2809, IATF16949, PED, CNAS, etc. At the same time, it cultivates employees, stimulates organizational creativity and is committed to building the most competitive stainless steel enterprise.



燁興企業股份有限公司
YIEH HSING ENTERPRISE CO., LTD.



設立日期	1978 年 7 月
員工人數	約 440 人
產線	軋延線、固溶化、酸洗線
主要產品	各類線材盤元 - 包括不銹鋼、碳鋼、合金鋼、快削鋼之製造及銷售

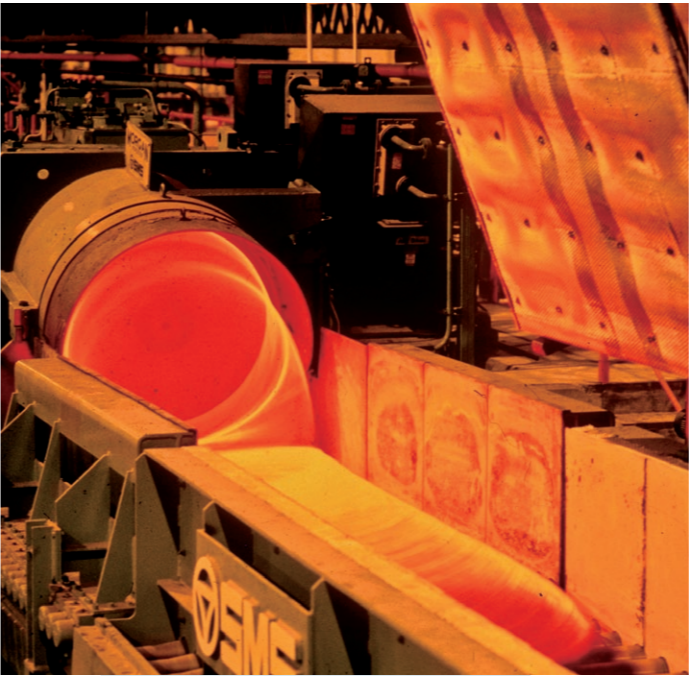
Date of Establishment	July, 1978
Number of Employees	approximately 440
Production Lines	Rolling Mill, Solution Annealing, Pickling Line
Main Products	Stainless Steel Wire Rod, Carbon Steel Wire Rod, Free-Cutting Steel Wire Rod, Alloy Steel Wire Rod



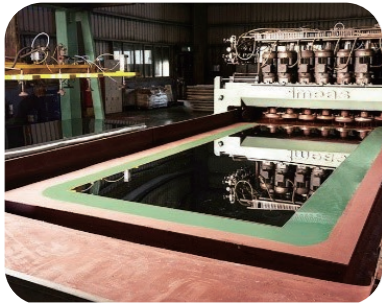
燁興企業 為義聯集團於 1978 年創立之第一家公司，創立初期以碳鋼、鍍鋅鋼管為主產品，1991 年岡山線材廠成立，1997 年加入屏南線材廠，轉型為碳鋼、不銹鋼之專業線材製造廠，目前主要產品為各類線材盤元，包括不銹鋼、碳鋼、合金鋼及快削鋼，年產能約 500,000 噸，可提供完整尺寸與鋼種；供應下游客戶製成各式螺絲、螺帽及各項工業產品、電子產品及航太等基礎零件。燁興公司擁有完整的檢驗設備，並通過 ISO 9001、歐盟 PED 及印度 ISI FMCS 等品質系統認證，亦通過 ISO 14001 環境、ISO 45001 職業安全衛生、ISO 50001 能源等多項管理系統認證，於 2020 年取得日本設備維護協會 (JIPM) 優秀賞之殊榮。成立之初燁興即以快速回應客戶需求、快速反應市場資訊、快速交貨之「三快」服務客戶，未來亦將秉持著相同精神提供客戶所需，並期望能持續發展成為最專業、最具競爭力的線材專業生產廠商。

Yieh Hsing Enterprise Co., Ltd. (YH), the first company of E United Group, was established in 1978. At the beginning of the establishment, carbon steel and galvanized steel pipes were our main products. After a wire rod mill located in Gangshan, Kaohsiung was established in 1991 and another wire roll mill located in Pingnan, Pingtung joined us in 1997, we have transformed into a professional wire rod manufacturer for carbon steel and stainless steel. At present, the main products are various wire rod coils, including stainless steel, carbon steel, alloy steel, free-cutting steel, with an annual production capacity of about 500,000 metric tons. We provide full size and various steel grades for downstream customers to make all kinds of screws, nuts and basic parts applied in industrial, electronic and aerospace products. In order to meet customers' needs, YH sets up a complete quality control system. We have been awarded the ISO 9001 for quality management, EU Pressure Equipment Directive (PED) and Indian ISI for the Foreign Manufacturers Certificate Scheme (FMCS). We have also passed ISO 14001 for environmental management, ISO 45001 for occupational safety and health, ISO 50001 for energy and other management system certifications. In 2020, YH obtained the honor of Excellence Award from Japan Institute of Plant Maintenance (JIPM) as well.

YH has established 3QS (Quick response, Quick market reaction, and Quick delivery) to ensure customer satisfaction. Our vision lies in continuous advancement, becoming a renowned professional steel producer.



燁茂實業股份有限公司
YIEH MAU CORP.

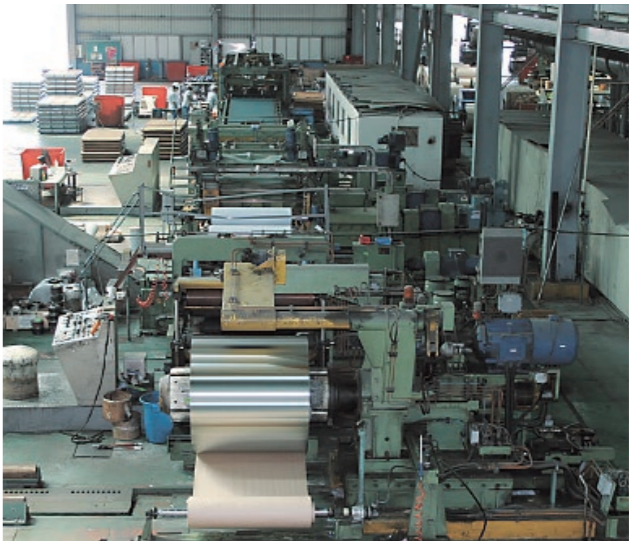


設立日期	1988 年 3 月
員工人數	約 140 人
產線	分條機、整平及裁板機、拋砂研磨機、鏡面研磨機、小型裁板機、NO.1 裁板機、油壓剪床
主要產品	不銹鋼不同表面品級之加工生產與銷售、鋼鐵貿易、集合住宅與辦公室之投資興建與銷售

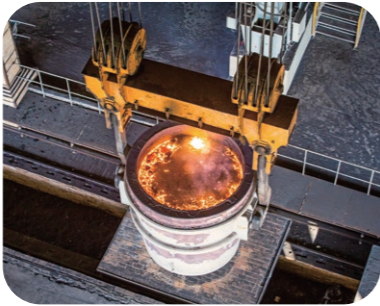
Date of Establishment	March, 1988
Number of Employees	approximately 140
Production Lines	Slitting Line/ Leveling And Cut To Length Line/ Grinding And Polishing Line/ Mirror Finishing/ Mini Cut To Length Line/ NO.1 Levelling And Cut To Length Lines/ Hydraulic Shear
Main Products	Surface finishing, trading and selling for stainless steel. Houses and offices construction and sales

燁茂實業 初期從事鋼品之進口貿易及國內銷售，扮演集團內貿易商角色。1994 年起，轉入製造業，生產及銷售不銹鋼、合金鋼等特殊鋼線材，但仍維持原鋼鐵貿易商功能，其中貿易及製造業約佔一半。並於 1996 年起，朝不銹鋼下游加工業發展，高雄路竹廠生產之產品含鏡面、髮絲不銹鋼捲板等。2008 年引進裁剪加工及各類專業不銹鋼表面加工設備，將成為不銹鋼中間製品之主力供應商。

Yieh Mau Corporation (YM) was initially a trading house for all the metal products. In 1994, YM expanded to Manufacturing business, producing and selling special steel wire products of stainless steel and alloy steel and maintaining the original stainless steel trading function, of which trading and manufacturing account for half. Since 1996, YM, which plant is in Luzhu, Kaohsiung, has moved downstream and has started to produce many high value added stainless steel surface treatment products, including mirror finish, hairline finish stainless steel coil. The customized Cut to Length Line was introduced in 2008. YM is a key provider with a wide range of flat stainless steel products in the global market.



福建联德企业有限公司
FUJIAN LIAN DE ENTERPRISE CO., LTD.



設立日期	2011 年 2 月
員工人數	約 900 人
主要設備	乾燥窯、回轉窯、礦熱爐、渣粒化系統、靜電集塵系統、脫硫系統、鑄鐵機、制砂主機
主要產品	鎳基料、機制砂

Date of Establishment	February, 2011
Number of Employees	approximately 900
Main Equipment	Dryer, Rotary Kiln, Electric Arc Furnaces, Slag Granulation System, Electrostatic Precipitator System, Flue Gas Desulfurization System, Ingot Casting Machine, Sand Making Machine
Main Products	Nickel Pig Iron, Manufactured Sand

聯德企業 設立於福建省寧德市（漳灣）臨港工業區，用地面積達 1,140 多畝，可年產 20 萬噸鎳合金，主要作為不銹鋼煉鋼生產原料。生產線採用先進的 RKEF 工藝，主要設備包含乾燥窯、回轉窯、礦熱爐。有效利用餘熱與爐料熱裝達到節能兼環保、生產效率高、產品品質好的生產目標。秉持 " 先知先治 " 、" 節能減排 " 的環保理念，在建設規劃之初即優先考慮生態環境的保護，配備完善的環保設施，包含集塵處理系統、廠內廢水處理系統、脫硫廢水處理系統等。為推進爐渣（水淬渣）綠色處理，公司設計投用水淬渣精製成機制砂的生產工藝程序，智慧化加工生產機制砂，轉廢為寶，為公司創造營收效益。將全力打造資源節約型、科技創新型、環境友好型、生活低碳型的現代化工業園區。

LianDe Enterprise Co., Ltd. is located at the harbor industrial zone in Ningde City, Fujian Province (Zhangwan) China and covers a land area of more than 1,140 acres. It has an annual production capacity of 200 thousand tons of nickel alloys, primarily used for stainless steel making. Adopting the advanced RKEF technology, main production equipment includes dryers, rotary kilns and electric arc furnaces. By effectively using waste heat and the method of hot charging, the company is able to achieve the goals of energy saving, environmental protection, high production efficiency, and excellent product quality.

Being run on the eco-friendly principle, which is "early awareness for early control" and "energy saving & carbon reduction", the company sets environmental protection, the conservation of nature and equips with a completely set of environmental protection facilities as its priority from plant planning to construction. Hence the facilities such as dust collection system, plant wastewater treatment system and desulfurization wastewater treatment system are adopted for production. The company has implemented a modern slag granulation system aimed at recycling slag; thereby converting granulated blast-furnace slag into manufactured sand. This advanced manufacturing system underscores the company's commitment to eco-friendly practices by effectively repurposing production waste into a viable product. The company will further be committed to building a modernized plant area that is oriented towards resource conservation, technology innovation, environmental friendliness, and a low-carbon lifestyle.



 **福建联维物流有限公司**
FUJIAN LIAN WEI LOGISTICS CO., LTD.



設立日期	2011 年 6 月
員工人數	約 100 人
營業項目	為冶金原材料物流企業，提供鎳鐵行業生產所需的原材料

Date of Establishment	June, 2011
Number of Employees	approximately 100
Services	transportation of metallurgical raw material



聯維物流 為冶金原材料物流企業，設於福建省寧德市，毗鄰聯德公司，是寧德地區鎳鐵廠紅土礦物流行業的先驅。旨在帶動冶金行業物流的發展，提高專業化服務、管理水準。項目通過採購、預處理、合理儲備與供給，為鎳鐵行業提供生產所需的原材料，降低生產企業風險。廠區臨近碼頭，海運便利。

隨著硫化鎳礦資源枯竭，氧化鎳礦（紅土鎳礦）的開發利用在世界上已經得到迅速的發展。氧化鎳礦廣泛分佈於赤道地區，距離福建運距近，海運費用不高，這有利於利用氧化鎳礦資源的開發和利用，成為增加原生鎳供給量的一個重要來源。

Lian Wei Logistics Co., Ltd. (LWL) is based in Ningde City, Fujian Province, adjacent to Lian De Enterprise Co., Ltd. LWL engages in the transportation of metallurgical raw materials and is the pioneer in promoting red soil mining business among nickel pig iron plants in Ningde. Our mission is to promote the development of logistics for the metallurgy industry, offer related professional services and enhance management quality. Through purchasing, preprocessing, reasonable storage and supply, we provide nickel pig iron smelters with raw materials, which help them reduce production risks. The plant's short distance to the harbor makes marine transportation even more convenient.

With the decline of nickel sulfide deposits, the utilization of nickel oxide (nickel laterites) has been rapidly developed around the world. Since the nickel oxide ores are widely distributed in the equatorial regions, the distance for transporting the ores to Fujian is not far; therefore, the sea freight doesn't cost much. This will facilitate the development and utilization of nickel oxide and consequently we serve as another important source for increasing supply of primary nickel.





教育事業體 EDUCATION

教育是百年大計，以建構從幼兒園、小學、中學、大學、研究所的完整教育體系為目標。在現有的基礎上，期許能兼顧人本與科技的教育宗旨，滿足學生在專業知識上的追求，並積極與全球知名大學合作，以深化學生的跨國學習能力和競爭力。教育的理念是秉持「終身學習、受用終身」，配合世界經濟及社會脈動的趨勢，培育出社會所需的人才，為教育事業體的目標願景。

Education is an endeavor of vital and lasting importance. By building a fully-integrated educational system ranging from kindergarten, elementary school, junior and senior high school, and then undergraduate education to graduate school, we expect to satisfy students' pursuit of professional knowledge. We will actively seek collaboration with renowned universities throughout the world in order to broaden students' horizons and enhance their competitiveness. Our educational philosophy is "learning lasts a lifetime." In line with global economic and social trends, we are devoted to cultivating talents that meet the needs of society



義守大學
I-Shou University
義大國際高級中學
I-Shou International School



設立日期	1986 年，原名高雄工學院，1990 年開始招生 1997 年更名為義守大學 2006 年 9 月成立燕巢分部 (現為義守大學醫學院區)
師資	約 500 人
學院	9 個學院：智慧科技學院、工學院、管理學院、傳播與設計學院、國際學院、觀光餐旅學院、醫學院、醫學科技學院、原住民族學院。
學生人數	本國籍學生約 10,000 人，境外學生約 1,400 人
學校特色	1. 義守大學是一所跨人文、科技、醫學的國際化綜合型大學。 2. 以健康醫學 X 智慧科技為核心，最具跨域創新、產學服務能力之國際化綜合型大學。 3. 管理、國際、觀餐三學院全球唯一同時通過 AACSB 國際商管教育認證，躍身全球前 5%，又於 2021 年通過「國際商管教育持續精進 CIR 認證」，顯示國際商管教育持續精進。
Date of Establishment	I-Shou University (ISU), formerly known as Kaohsiung Polytechnic Institute (KPI), was founded in 1986 and started to recruit students in 1990. The Yanchao Campus (a.k.a. Medical Campus) was established in September 2006.
Number of Faculty members	approximately 500 people
Colleges	9 colleges: College of Intelligent Science & Technology, College of Engineering, College of Management, College of Communication & Design, International College, College of Tourism & Hospitality, College of Medicine, College of Medical Science & Technology, and College of Indigenous Studies
Number of Students	Local students: approx. 10,000 International students: approx.1,400
Features	1.ISU is a truly global comprehensive university that values humanities, technology, and medicine. 2.With its foundation in medicine and smart technology, ISU aspires to be a truly global comprehensive university that champions interdisciplinary innovation and deepens industry- university collaboration. 3.The College of Management, the International College, and the College of Tourism & Hospitality earned the AACSB accreditation with one review visit in 2016 and then passed the AACSB CIR in 2021, showing continuous improvement in international business education.

義守大學 創立於 1986 年，由義朕集團創辦人林義守先生，為感念慈母劬養之恩及回饋鄉里之情，秉持為國家培育人才之理念而興辦。本校在校務評鑑、系所評鑑及 IEET 工程教育認證等各項評鑑，均獲全數通過之佳績；2016 年管理、國際、觀餐更為全球唯一同時三學院通過 AACSB 國際商管教育認證，躍升國際，又於 2021 年通過「國際商管教育持續精進 CIR 認證」，顯示義守大學國際商管教育持續精進。

本校設有智慧科技、工、管理、傳播設計、國際、觀光餐旅、醫學院、醫學科技以及原住民族，共 9 個學院，在教學上，鼓勵跨域創新、跨領域學習，並透過集團各事業體間之跨部門整合，提供學生實習與就業的實務銜接，同時擁有來自 40 多國約 1,400 位境外生，並與歐、美、澳、亞各洲約 600 所學府締結姊妹校、海外共 13 所姊妹校簽訂雙學位制，2021 年設置雙語大學推動辦公室，獲教育部「大專校院學生雙語化學習計畫」重點培育學校 (學院) 補助，預計 2028 年成為以全英授課為主的國際化大學。義守大學是一所重視人文、科技、醫學並培育跨域人才，也是南台灣最具規模、學系最多元的國際化綜合型私立大學。

I-Shou University (ISU) was founded by Mr. Lin I-Shou in 1986 to commemorate his mother, benefit the village where he started up his business, and nurture talents for the country. Not only did ISU pass the institutional accreditation, the program accreditation, and the IEET accreditation with flying colors, but the College of Management, the International College, and the College of Tourism & Hospitality earned the AACSB accreditation with one review visit in 2016 and then passed the AACSB CIR (Continuous Improvement Review) in 2021, showing continuous improvement in international business education at ISU.

Currently, ISU has nine colleges, including College of Intelligent Science & Technology, College of Engineering, College of Management, College of Communication & Design, International College, the College of Tourism & Hospitality, College of Medicine, College of Medical Science & Technology, and College of Indigenous Studies. We not only encourage faculty members and students to learn and grow across borders and disciplines, but also enlist the resources of E United Group in opening up internship and employment opportunities for students. ISU has 1,400 international students from more than 40 countries, and entered into partnership with some 600 schools worldwide, including, Europe, America, Australia, and Asia, and collaborated with 13 partner universities on offering dual-degree programs. In 2021, ISU set up the Bilingual Education and EMI Center and received substantial subsidies under the Program on Bilingual Education for Students in College (BEST) launched by the Ministry of Education, with an eye to becoming an EMI university in 2028. As one of the biggest institutions of higher education in Southern Taiwan, ISU values humanities, technology, and medicine and aspires to nurture interdisciplinary talents.





義大國際高級中學 I-SHOU INTERNATIONAL SCHOOL



設立日期 2004 年 8 月

師資 約 110 人

招生年級 高中、國中、國小及幼兒園

學生人數 約 640 人

- 學校特色**
1. 十二年一貫的國際高中，包含高中、國中及國小。
 2. 本校為全台第一所完整通過 IB 國際文憑組織 DP、MYP 及 PYP 三項課程認證的 IB 世界學校。
 3. 本校獲得 CIS 國際學校協會認證。
 4. 提供國內外升學之雙軌教育課程，幫助學生前進理想大學。
 5. 本校提供七天住宿規劃。

Date of establishment August, 2004

Number of Qualified Teachers approximately 110

Grade K-12

Number of students approximately 640 people

- Features**
1. IIS provides a comprehensive bilingual education including preschool, primary, middle and high school.
 2. We are the first IB world school in Taiwan authorized to teach the three IB programmes (DP, MYP, and PYP)
 3. Our School has been awarded accreditation by the Council of International Schools (CIS).
 4. IIS offers two distinctive programmes aiming for the students to enter national or overseas universities.
 5. IIS provides a 7-day boarding house program.

義大國際高級中學 是負有聲望的雙語日間 / 寄宿學校。透過嚴謹的探索學習與應變二十一世紀實用技能的培養，致力於成就學生的智育與個人發展。在協作教學的情境中，我們提供具有國際情懷的多元學習路徑，讓他們能充分實踐自己的角色，成為擁有社會責任之全球公民。

I-Shou International School (IIS) is a renowned bilingual day/boarding school striving to foster intellectual and personal growth through rigorous inquiry and the development of 21st-century skills; in our collaborative teaching and learning community, we provide multiple pathways for internationally minded learners to fulfill their roles as socially responsible global citizens.





醫療事業體 MEDICAL SERVICES & HEALTH CARE

林創辦人有感於民衆對優良醫療環境的衷心企盼，積極在醫療資源較為缺乏之地區開展設置醫院，「義大醫療財團法人」目前包括「義大醫院」、「義大癌治療醫院」、「義大大昌醫院」以及現正建設中之「屏東義大醫院」，除在現有的急性醫療持續精進外，秉持滿足民衆對醫療需求的初衷，亦陸續設置「義大護理之家」、「義大產後護理之家」及「義大貝思諾產後護理之家」，以提供民衆更完整之醫療照護。

「義大醫療體系」的創立理念就是要給社會大眾最好的五星級設施及五心級服務，五心級服務即創辦人最有心、醫師群最用心、護理人員最貼心、環境最溫馨（心）及儀器設備最新（心）。期望成為社區醫療的靠山，提升南台灣的醫療水準並發展國際醫療及先進診療技術，提供再生醫學、細胞治療及引進智慧醫療，推動預防以及治療並進之完全照護服務，以仁心與堅實的醫療團隊來服務民衆，實現創辦人回饋社會大眾的心願。

Our founder, Mr. Lin, recognizing the public's need for quality healthcare, actively establishes hospitals and care centers in regions with relatively scarce medical resources. This initiative aims to offer the community more comprehensive medical care. Our healthcare enterprise includes E-DA Hospital, E-DA Cancer Hospital, E-DA Dachang Hospital, E-DA Nursing Home, E-DA Postpartum & Babycare Center, and E-DA Bassinet Mother & Baby Care Center. Furthermore, the construction of Pingtung E-DA Hospital is in full swing, and it is scheduled to join in the future.

The guiding principle of these hospitals is to offer the general public top-notch five-star facilities and five-heart service. This five-heart service signifies our founder's utmost dedication, our medical team's unwavering commitment, our nursing staff's genuine care, an environment that is warm and welcoming, and the utilization of the latest equipment. We aspire to be the bedrock of community healthcare, elevating medical standards in Southern Taiwan, advancing international healthcare, and embracing cutting-edge medical technologies, such as regenerative medicine, cell therapy, and smart healthcare. Additionally, we are committed to promoting comprehensive care services that seamlessly integrate prevention and treatment. Our devoted medical team serves the public with compassion, fulfilling the founder's vision of giving back to the community.



- 義大醫院
E-DA Hospital
- 義大大昌醫院
E-DA DaChang Hospital
- 義大護理之家
E-DA Nursing Home
- 義大產後護理之家
E-DA Postpartum and Babycare Center
- 義大貝思諾產後護理之家
E-DA Bassinet Mother and Baby Care Center
- 義大癌治療醫院
E-DA Cancer Hospital
- 屏東義大醫院
Pingtung E-DA Hospital





設立日期	2004 年 4 月正式營運
員工人數	約 2,800 人
設置科別	內科部、外科部、骨科部、婦產部、兒童醫學部、中醫科、病理部、放射醫學部、急診醫學部、麻醉部及其他專科
核可床數	急性病床 930 床、特殊病床 319 床
治療中心	急救創傷中心、癌症中心、心臟血管醫學中心、重建治療中心、器官移植中心、神經醫學中心、消化系醫學中心、國際減重暨糖尿病手術中心、生殖醫學中心、尖端醫美中心

Date of Establishment	April, 2004
Number of Employees	approximately 2,800
Departments	Internal Medicine, Surgery, Orthopedic Surgery, Gynecology and Obstetrics, Pediatrics, Traditional Chinese Medicine, Pathology, Radiology, Emergency Dept., Anesthesiology and Others.
Opening Beds	930 Acute Beds, 319 Special Beds
Medical Centers	Trauma Emergency Center, Cancer Prevention Center, Cardiovascular Medical Center, Center of Reconstructive and Esthetic Surgery, Organ Transplantation Center, Neurology Medicine Center, Gastroenterological Medicine Center, Bariatric & Metabolic International Surgery Center, Reproductive Medicine Center, Advanced Anti-Aging & Aesthetic Medicine Center.

義大醫院 環境空間猶如五星級飯店的空間營造，戶外名家雕塑、室內鋼琴演奏、入口的水舞噴泉，其特有的藝品與人文氣息，讓每一位來到義大醫院的來賓，跳脫對傳統醫院的印象，沒有藥水味、充滿咖啡香，義大醫院不僅是提供醫療服務，更是充滿著藝術氣息的休憩場所。

義大醫院自 2004 年成立以來，始終秉持著以成為國際一流醫學中心為願景。義大醫院醫療科別完整，醫師陣容來自各大醫學中心，醫療專精項目包括關節置換術、臂神經叢重建、減重手術、加馬刀手術、攝護腺雷射手術、心導管手術等。義大醫院擁有許多先進的儀器設備，包括 EDGE 速鋒刀、正子造影攝影儀、I-CON 加馬刀、64 切電腦斷層攝影儀、核磁共振造影儀等，提供病人高品質的醫療服務。

Based on the concept of patient-centered care, E-DA Hospital (EDAH) features a revolutionary design as well as an innovative environment that offers people with warm, comfortable and a five-star atmosphere. There are master sculptors' works, indoor piano performance, energetic water dance performance and fine art works on display. When you are in the Hospital, you could not but be amazed by its unique humane and artistic atmosphere.

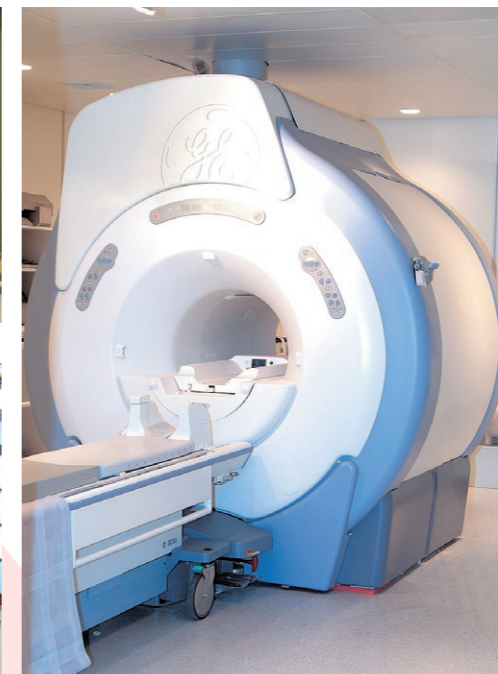
Since its foundation in 2004, EDAH has always been adhering to the vision of "to be a world-class medical center." Our elite team members are recruited from various medical centers to serve patients with professional medical knowledge, techniques, and a patient-centered diagnosis & treatment. We specialize in Total Joint Replacement, Treatment of Brachial Plexus Injury, Laparoscopic Bariatric Surgery, Treatment of Hyperhidrosis, Gamma Knife Radiosurgery, Prostate Laser Surgery and Cardiac Catheterization Examination. We also own the most technologically advanced equipment such as Edge® Radiosurgery System, PET/CT, I-CON Gamma Knife, 64-Slice CT, MRI. We provide customers with high-quality medical services.



複合式單光子電腦斷層掃描儀



健診中心



MRI 核磁共振造影儀



美容中心尊榮病房



I-CON 加馬刀



設立日期 2015 年 9 月正式營運

員工人數 約 900 人

設置科別 心臟內科、血液腫瘤科、胃腸肝膽科、呼吸胸腔內科、腎臟科、感染科、一般外科、大腸直腸外科、泌尿科、腦神經外科、胸腔外科、整形外科、婦產科、兒童醫學科、中醫科、骨科、腦神經內科、家醫科、放射腫瘤科、安寧緩和醫療科、精神科、皮膚科、新陳代謝科、心臟外科、復健科、耳鼻喉科

核可床數 急性病床 400 床、特殊病床 110 床

醫院特色

1. 以癌症病人為中心
2. 溫馨人性化的醫療空間
3. 智慧綠建築醫院
4. 療癒的醫療環境

Date of Establishment September, 2015

Number of Employees approximately 900

Departments Cardiology, Hematology & Oncology, Hepatogastroenterology, Respiratory Medicine, Nephrology, Infectious Diseases, General Surgery, Colon and Rectal Surgery, Urology, Neurosurgery, Thoracic Surgery, Plastic Surgery, Obstetrics and Gynecology, Pediatrics, Chinese Medicine, Orthopedics, Neurology, Family Medicine, Radiation Oncology, Hospice Palliative Care, Psychiatry, Dermatology, Endocrinology, Cardiac Surgery, Rehabilitation, Otolaryngology.

Opening Beds 400 Acute Beds, 110 Special Beds

Medical Features

1. Focus exclusively on cancer treatment.
2. Humanized medical environment.
3. Smart and green buildings.
4. Comforting environment.

義大醫療

義大癌治療醫院

有鑑於癌症發生率攀升，為平衡南北醫療資源差異，義大癌治療醫院於 2015 年 9 月正式投入營運。在診斷上我們擁有最先進的檢查儀器與設備，能迅速準確的診斷疾病，如：第四代達文西機器手臂手術系統、640 切電腦斷層掃描儀、3T 高磁場強度 MRI、直線加速器以及建造兩間結合術中電腦斷層掃描、術中血管攝影的複合式手術室；在醫療上，招募來自各醫學中心的精英團隊，以病人為中心的診療模式，從急性治療到安寧緩和照護，我們提供病人身心靈兼顧的全人醫治和持續性的醫療照顧。

此外，義大癌治療醫院也提供一平台，結合義守大學、國內外生醫學系及生技產業，共同推展生醫材料、醫學工程及醫學資訊、轉譯醫學的研究與開發。

To cater for the growing needs of cancer patients and to balance the medical resources between northern and southern Taiwan, E-DA Cancer Hospital (EDCH) embarked on its public services in September 2015. Based on the main concept of serving our society and the vision of becoming a world-class cancer center, we use and develop diagnostic technology and equipment, such as da Vinci Xi Surgical System, 640 Slices CT Scan, 3 Tesla (3T) MRI, Linear Accelerator, CT Scan Operating Room and Hybrid Operating Room, which let physicians pinpoint each patient's cancer and tailor treatment for the best possible health outcomes.

Furthermore, EDCH provides a platform for I-Shou University, departments of biomedicine worldwide and biotechnology industries. Through the three-party cooperation, research and development in the areas of biomedicine materials, medical engineering & medical informatics engineering and translational medicine will be enriched.



引進先進檢查儀器 -3 Tesla (3T) MRI



結合術中電腦斷層掃描、術中血管攝影的複合式手術室 (Hybrid Operating Room)



媲美五星級飯店的醫院優雅環境



先進的癌症治療設備 -Versa HD 直線加速器



高階 640 切高速電腦斷層 (CT)



設立日期 2016 年 10 月正式營運

員工人數 約 660 人

設置科別 婦產科、小兒科、心臟內科、胃腸肝膽科、呼吸胸腔科、腎臟科、血液腫瘤科、新陳代謝科、神經科、家醫科、一般外科、神經外科、泌尿科、大腸直腸外科、骨科、胸腔外科、耳鼻喉科、皮膚科、精神科、牙科、口腔外科、中醫科、復健科、整形外科、美容醫學、體檢科、感染科

核可床數 急性病床 220 床、特殊病床 108 床

Date of Establishment October, 2016

Number of Employees approximately 660

Departments Obstetrics and Gynecology, Pediatrics, Cardiology, Hepatogastroenterology, Respiratory Medicine, Nephrology, Hematology & Oncology, Endocrinology, Neurology, Family Medicine, General Surgery, Neurosurgery, Urology, Colon and Rectal Surgery, Orthopedics, Thoracic Surgery, Otolaryngology, Dermatology, Psychiatry, Dentistry, Oral Surgery, Traditional Chinese Medicine, Rehabilitation, Plastic Surgery, Aesthetic Medicine, Physical examination and Infectious Diseases.

Opening Beds 220 Acute Beds, 108 Special Beds

義大大昌醫院 2016 年 10 月設置在高雄市三民區之「義大大昌醫院」正式投入營運。以病人為中心的空間規劃，提供溫馨舒適的五星級就醫環境；由來自義大醫療體系的菁英醫師團隊，輔以先進醫療儀器設備，以專業負責面對每一個託付、以包容尊重及耐心愛心守護病友的健康和生命。義大大昌醫院以婦產科、小兒科為重點，並提供完整醫療科別照護，包含內科、外科、骨科、整形外科、耳鼻喉科、皮膚科、精神科、牙科、中醫科、復健科等各科門診及洗腎服務，並設置海芙刀中心、國際美容醫學中心、生殖醫學中心、纖體健康中心、男性健康中心及健診中心，以精緻化、在地化醫療以及系統化、專業化服務，期許提供全方位的照顧，成為守護民衆健康的好厝邊。

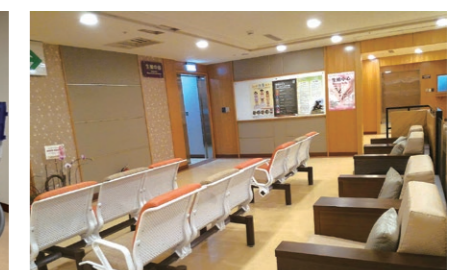
E-DA DaChang Hospital (EDDH), which is located in Sanmin District, Kaohsiung, launched the official operation in October 2016. Based on the concept of patient-centered care, the Hospital features a revolutionary design as well as an innovative environment that offers people with warm, comfortable and a five-star atmosphere. By our professional and experienced team, together with advanced medical equipment, we ensure our patients to receive the best medical care. We focus on Obstetrics and Gynecology and Pediatrics, offering highly specialized services including Internal Medicine, Surgery, Orthopedics, Plastic Surgery, Otolaryngology, Dermatology, Psychiatry, Dentistry, Traditional Chinese Medicine, Rehabilitation and Hemodialysis, and so on. Furthermore, we have set up High Intensity Focus Ultrasound Center, International Aesthetic Medicine Center, Reproductive Medicine Center, International Slimming and Health Management Center, Men's Health Center and Health Examination Center. Our goal is to provide comprehensive, systematic and localized services and facilities, hoping to be the strongest guardian in the neighborhood.



提供完整且專業照護的血液透析室



640 切超高速全片幅電腦斷層掃描儀



專業的生殖中心



溫馨卡通造型的兒童病房



1.5 特斯拉磁振造影掃描儀 (1.5T MRI)



舒適隱密的醫美中心



設立日期	積極建設中，預計 2025 年年中營運
編制人數	約 1,300 人
設置科別	一般外科、神經外科、泌尿科、大腸直腸外科、骨科、胸腔外科、心臟外科、整形外科、放射腫瘤科、婦產科、小兒科、心臟內科、胃腸肝膽科、胸腔內科、腎臟科、血液腫瘤科、新陳代謝科、神經科、風濕免疫科、皮膚科、精神科、牙科、復健科、家醫暨體檢科及其他專科
核可床數	急性病床 495 床、特殊病床約 300 床
Date of Establishment	The construction of the Hospital is in full swing, and it is anticipated to be completed, with operations commencing in mid-2025.
Number of Employees	approximately 1,300
Departments	General Surgery, Neurosurgery, Urology, Colon and Rectal Surgery, Orthopedics, Thoracic Surgery, Cardiac Surgery, Plastic Surgery, Radiation Oncology, Obstetrics and Gynecology, Pediatrics, Cardiology, Hepatogastroenterology, Respiratory Medicine, Nephrology, Hematology & Oncology, Endocrinology, Neurology, Rheumatology, Dermatology, Psychiatry, Dentistry, Rehabilitation, Family Medicine and Special Subjects.
Opening Beds	495 Acute Beds, 300 Special Beds

屏東義大醫院 為改善屏東縣民衆跨區就醫問題及提升當地醫療資源，義聯集團創辦人林義守董事長本著事業有成的回饋精神及「創新、成長、責任、永續」的理念，進行籌設「義大醫療財團法人屏東義大醫院」。屏東義大醫院以朝區域級以上教學醫院進行規劃，其座落於屏東縣健康產業園區，該園區包含急性醫療之醫院、住宿型長照機構（護理之家）及產後護理之家、員工宿舍等綜合性結合醫療與長照之健康園區，是以急重難症醫療、婦幼醫療及尖端醫療為發展重點，規劃設置五大醫療中心，包括急救創傷中心、心臟血管中心、神經醫學中心、消化醫學中心、高齡醫學中心；並以精準醫療、細胞治療、高階影像設備與導入遠距醫療暨策略聯盟，打造智慧化就醫環境，並以病人為中心追求病人安全、醫療品質、及尊重病人權利為服務宗旨，提供屏東民衆方便、安全和舒適的就醫環境，以及高品質、即時性、完整性的醫療預防保健照護服務。

In order to improve the medical access for people living in Pingtung County and increase local medical resources, Mr. Lin I-Shou, the Founder of E United Group, based on his concept of philanthropic responsibilities and business philosophy of innovation, growth, responsibility and continuity, established Pingtung E-DA Hospital (PEDH) located in the Pingtung Health Industrial Park. We are planning to become a regional teaching hospital and the Health Industrial Park comprises of a long-term medical care hospital, a nursing home, a postpartum care center, and employee housing units. We will focus on developing acute and severe medical care, maternal and child care and cutting-edge medical care, and plan to set up five medical centers (i.e. Trauma Emergency Center, Cardiovascular Medical Center, Neurology Medicine Center, Gastroenterological Medicine Center and Center for Geriatrics and Gerontology). Furthermore, PEDH will evolve advanced diagnostic and treatment technologies, cell therapy and provide the best medical services by installing high-end imaging equipment and introducing telemedicine and strategic alliances to create an intelligent medical environment. Based on the concept of patient-centered care, we will always keep in mind to pursue patient safety, medical quality, and respect the rights of patients, and providing high-quality, immediate, complete medical preventive care services and a convenient, safe, comfortable medical environment for local residents is our primary goal.





設立日期 2016 年 12 月正式營運

服務對象

1. 有長期慢性病、年邁機能退化或日常生活起居需由他人協助照顧之個案。
2. 由急性醫療出院後，仍有照護需求之個案。
3. 需長期復健、血液透析、化學治療、放射線治療、中醫針灸治療家人沒空陪同者。
4. 罹癌個案需長期照護者。
5. 有技術性照護之需求者（如各種管路留置及傷口換藥）。
6. 短期臨托需照護之個案。
7. 需長期使用呼吸器輔助者。

核可床數 165 床

Date of Establishment December, 2016

Our Services

1. People with long-term chronic diseases, aging and functional deterioration or need to be cared for by others in daily life.
2. People with continuing care needs after discharge from acute medical care.
3. People who need long-term rehabilitation, hemodialysis, chemotherapy, radiation therapy, and TCM acupuncture treatment don't have family members to accompany by them.
4. People with cancer requiring long-term care.
5. People in need of technical care. (such as pipeline indwelling and wound dressing change).
6. People who need short-term temporary care.
7. People who need long-term use of respirator.

Opening Beds 165

義大護理之家

隨著家庭社會結構的改變、人口結構高齡化以及疾病照護型態的改變，長期照護需求量也隨之增加。義大醫療財團法人為提供無縫式接軌且完整之連續照護服務，於 2016 年 12 月成立義大護理之家並正式投入營運。義大護理之家本著「安全、尊嚴、陪伴、快樂」之照護理念，將人性尊嚴及晚年優質生活做為目標，並以專業化、人性化、家庭化之「住民為中心」服務模式，提供多元、安全及有品質的全人照護服務，以及溫馨、舒適、安全、健康的居住療癒環境。

在醫療服務方面，有來自義大醫療體系的主治醫師巡診，進行身體周全性評估、藥物整合等醫療服務。機構具備專業的護理團隊及經訓練合格的照顧服務員提供個別化服務，包括測量血壓、給藥、傷口護理、管路照護及協助翻身、拍背、移位、沐浴、盥洗、餵食等起居生活照顧，更有營養師、物理治療師及職能治療師等團隊提供住民所需之服務。同時機構定期提供靜態、動態休閒活動如畫畫、園藝、慶生、歌唱等，期望建構出完善的社會支持服務，提供每位長期照護需求者一個更有品質的生活。

With changes in the size and structure of the family, the phenomenon of ageing population, and the pattern of diseases, the demand for long-term care is increasing year by year. In order to provide seamless and complete continuous care services, E-DA Nursing Home (EDNH) was established in December 2016 and officially started operation. Our compassionate and professional team, with the concept of "safety, dignity, companionship, and pleasure," provides the elderly and patients with whole-person care to improve patients' well-being and health outcomes.

Physicians from our clinical divisions provide periodic physical assessments, drug integration and other medical services. We also have a professional nursing team and qualified care attendants to provide individualized services, including blood pressure measurement, drug administration, wound care, pipeline care, and assisting with turning over, back patting, moving, bathing, washing, feeding and other daily life care. Furthermore, our nutritionists, physiotherapists and occupational therapists provide services upon patients' requests. Providing static and dynamic leisure activities such as painting, gardening, birthday celebration, and singing is another significant feature. We expect to construct a comprehensive social support service to provide each person with long-term care needs with a better quality of life.



義大產後護理之家

E-DA POSTPARTUM and BABYCARE CENTER



設立日期	2017 年 3 月正式營運
核可床數	媽媽 52 床、寶寶 58 床，共 110 床
服務內容	1. 產婦嬰兒護理照護 2. 專業醫療團隊照護 3. 親子教室課程指導 4. 個別護理衛教指導 5. 24 小時彈性親子同室 6. 專業乳房護理服務 7. 精緻月子餐點

Date of Establishment March, 2017

Number of suites 52

Our Services

1. Mom and infant nursing care.
2. 24/7 Care Team for mom and baby.
3. Babycare and Parenting classes.
4. 24/7 flexible rooming-in.
5. Lactation support.
6. Nutritious confinement meals.

義大產後護理之家

為建構完善的母嬰照護環境，義大產後護理之家以「品質、卓越、尊榮」為宗旨，以營造溫馨舒適的環境及成為全家人的守護為服務理念，於 2017 年 3 月 14 日正式營運。主要服務對象為產後未滿兩個月之健康產婦及出生未滿兩個月之健康嬰兒。

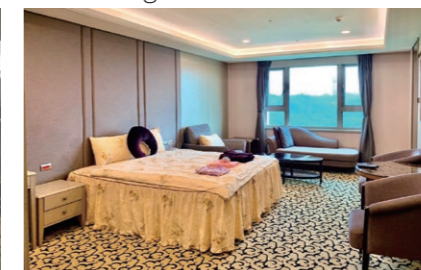
產後「坐月子」是東方人極重視的一項傳統。我們秉持予媽咪及寶寶在寧靜舒適的優質環境及潔淨明亮的活動空間中，接受來自義大醫療體系婦產科、小兒科、營養專科、精神科及中醫科等跨專業團隊的優質照護，並有專業護理師提供產婦每日身體評估，擬定完整照顧計畫，依產婦個別需求，給予產婦與嬰兒居家照顧之 24 小時不間斷照護服務。

另由具產兒科護理經驗之護理師及訓練合格的專業保母人員執行新生兒的生活照護，在嬰兒安全防護設備，於每台塑鋼嬰兒床配置一組『嬰兒律動感側儀』，當 20 秒感測不到嬰兒律動時主機的警報聲響就會啟動警示聲提醒，給予寶寶多一份安全保護。機構有獨立管控電梯，機構內另附設專業諮詢室、哺乳室、體適能教室、休憩閱覽室、SPA 舒適按摩空間等，使媽咪與寶寶可以在身、心、靈上得到最佳的調養與依靠。

To further extend all-round services and build a sophisticated maternal and child care environment, E-DA Postpartum and Babycare Center, with the concept of providing "high quality, excellent and honorable" services, and a desire to become a guardian of the whole family, launched the official operation on March 14, 2017.

"Sitting the Month" or having a month of confinement is an important tradition for Asian new mothers. E-DA Postpartum and Babycare Center is the comfortable and secure place for new mothers to relax and bond with their baby. We also provide professional and high-quality care from our clinical divisions: Obstetrics and Gynecology, Pediatrics, Nutrition, Psychiatry and Traditional Chinese Medicine. Our trained and experienced nurses specializing in maternal and infant care provide 24/7 baby care, daily health assessment for mothers and babies, and lactation support.

In terms of facilities and equipment in the Center, each plastic steel crib in baby room is equipped with a baby monitor; when the baby's movement is not detected in 20 seconds, the monitor will sound an alarm and our staff can immediately check the baby's safety. Moreover, we have elevators in independent service, a physical fitness room, a SPA room, a multi-functional activity room, a consultation reception and so on. It is our mission to make sure mothers and babies get the best care in body and mind.



義大貝思諾產後護理之家 E-DA BASSINET MOTHER and BABY CARE CENTER



設立日期	2018 年 10 月開幕
核可床數	媽媽 120 床、寶寶 125 床，共 245 床
服務內容	<ol style="list-style-type: none"> 1. 產婦嬰兒護理照護 2. 專業醫療團隊照護 3. 親子教室課程指導 4. 個別護理衛教指導 5. 24 小時彈性親子同室 6. 專業乳房護理服務 7. 精緻月子餐點

Date of Establishment October, 2018

Number of suites 120

Our Services

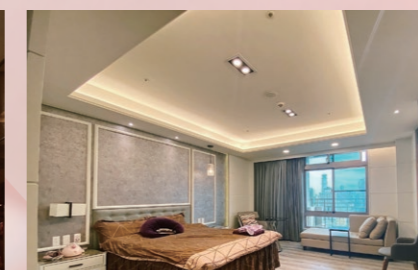
1. Mom and infant nursing care.
2. 24/7 Care Team for mom and baby.
3. Babycare and Parenting classes.
4. 24/7 flexible rooming-in.
5. Lactation support.
6. Nutritious confinement meals.

義大貝思諾產後護理之家

義大醫療財團法人附設「義大貝思諾產後護理之家」於 2018 年 10 月 19 日開幕，位於義大大昌醫院 12 至 16 樓，設置包含 125 床嬰兒床及 120 間單人高級套房，房型風格有美式簡約、歐美奢華、現代簡約、綺麗新古典、美式新風格、極致溫馨、浪漫巴洛克及典雅現代風等。館內溫馨安全創新的設施設備比照六星級飯店，包含 24 小時保全門禁管理、接待咖啡廳、獨立管控電梯、智能房控、體適能健身運動室、瑜珈教室、紓壓 SPA 房、紓壓按摩椅、嬰兒游泳池、多功能活動室、諮詢接待區、專屬停車位等設施設備。本著『安全舒適』、『溫馨關懷』、『品質卓越』精神，強調溫馨、隱私、安全與品質，讓產婦在坐月子期間備感尊榮與安全；此外，配置專業護理師、專業褓姆、媽媽秘書及管理師，並結合義大醫療婦產科、小兒科、中醫科、營養治療科等專科，為產婦和寶寶提供全方位照護服務，24 小時日夜守護母嬰健康。我們秉持品質、卓越、尊榮為宗旨，建構溫馨、安全的母嬰照護環境，並以提升母嬰照護品質、成為優質產後護理機構為目標。

With the successful operation of E-DA Postpartum and Babycare Center, E-DA Bassinet Mother and Baby care Center, which is located on the 12th to 16th floors of E-DA DaChang Hospital, began to join EGU's healthcare business on October 19, 2018; we then have a stronger postpartum support network. The Center includes 125 cribs and 120 deluxe single suites with American simplicity style, European and American luxury style, modern simplicity style, beautiful neo-classical style, romantic baroque style and elegant modern style and so on. Based on the concept of patient-centered care, E-DA Bassinet Mother and Baby Care Center features a revolutionary design as well as an innovative environment that offers mothers and babies with warm, safe, and comfortable atmosphere. The Center also occupies with amenities and supplementary services comparable to a six-star hotel, including 24-hour security access, a reception with café shop, elevators in independent service, a smart room controller, a physical fitness room, a yoga room, a SPA room, a massage chair, a baby swimming pool, a multi-functional activity room, a consultation reception, exclusive parking space, and so on.

Our professional and experienced team comprises of maternity nurses, babysitters, mother's secretary, OB/GYN physicians, pediatricians, Traditional Chinese physicians, and dietitians. Adhering to quality, expertise and honor, we aim to build a warm and safe maternal and child care environment and become a high-quality postpartum care institution.





地產及休閒事業體 REAL ESTATE & LEISURE BUSINESS

義大世界是台灣首創最完整之休閒觀光購物遊樂新地標，結合教育、醫療、飯店、運動、遊樂、購物、住宅等機能的完整休閒造鎮計畫，不僅滿足各年齡層的休閒娛樂需求，更涵蓋食、衣、住、行、娛、樂等全方位創新的生活型態，為台灣開創全新的生活旅遊體驗。繼義大世界後，於商務休閒領域的最新力作義享天地，位處於北高雄精華區，融合購物廣場、國際酒店、企業商辦、電影院及室內數位娛樂場為一體的概念，以科技、互動創造體驗式消費，智能商業提供更貼心的購物、休閒、娛樂、美食新空間，打造成為國際級城市綜合體。提升南台灣的國際競爭力及能見度，並朝綠色、生態、科技、文化及創新的方向持續發展。

E-DA World, the pioneer of a new landmark for creating one-stop vacation destination in Taiwan, integrates education, healthcare, hotels, sports, leisure, shopping, and real estate. We not only satisfy the entertainment needs of customers of all ages but also provide versatile functions with innovative lifestyle. This comprehensive township project has set up a unique travel and living experience in Taiwan. E Sky Land, following E-DA World, is the latest masterpiece in business and hospitality. Located in the heart of northern Kaohsiung, E Sky Land encompasses shopping malls, an international hotel, corporate offices, a cinema, and several indoor digital theme parks. As a business complex with international orientation, E Sky Land creates a consumption experience interactive with technology, and smart business provides customer-friendly atmosphere in shopping, leisure, entertainment, and gourmet food. The goal is to enhance the international competitiveness and visibility of Southern Taiwan, persistently developing an ecology with characteristics of green, environment, technology, culture, and innovation.



義大皇家酒店
E-DA Royal Hotel
義大天悅飯店
E-DA Skylark Hotel
義大世界購物廣場
E-DA Outlet Mall
義大遊樂世界
E-DA Theme Park
高雄萬豪酒店
Kaohsiung Marriott Hotel
義享時尚廣場
E SKY Mall
泛喬股份有限公司
Eliter International Corp.



義大皇家酒店

E-DA ROYAL HOTEL



設立日期	2008 年 4 月
員工人數	約 400 人
營業項目	1. 客房出租 2. 附設餐飲、會議場所、休閒場所及商店之經營 3. 其他經中央主管機關核准與觀光旅館有關之業務

Date of Establishment	April, 2008
Number of Employees	approximately 400
Services	1.Accommodations & Dining. 2.Meetings and conference venues, leisure facilities and shops operation. 3.Other tourist hotel related business operations approved by the central government.

義大皇家酒店 是南臺灣唯一結合休閒度假飯店、大型購物商場、主題遊樂園和藝術生態於一體的多元化度假休閒勝地。飯店擁有 656 間各式高級客房、5 間中西料理餐廳、20 間多功能會議及宴會場地、兒童俱樂部及時尚水療設施，還有亞洲唯一的「夢之湖」高科技影音聲光秀。

多元化的房型選擇，滿足不同的住宿需求，客房內設計有獨立陽台，讓您盡覽美麗風光，並備有液晶電視、免費網際網路、乾濕分離衛浴等現代化設施，以舒適寬敞的客房設計，讓賓客身心得以徹底放鬆。此外，住宿於飯店貴賓樓層，還可以享受到飯店精心準備的各項禮遇與專屬服務。

五大特色餐廳為您提供豐富的國際料理饗宴：包含星亞自助餐廳多國美食料理；皇樓中餐廳正宗廣式料理；義大利 CASA 時尚餐廳創意十足的義式美饌；The Cut 牛排屋鐵板燒的現代料理；以及產地食材新鮮直送的柳町日本料理；除此之外，位於大廳的烘焙坊，每日供應新鮮麵包、蛋糕與甜點。

飯店提供 2000 坪以上的休閒設施，包含健身房、三溫暖、皇家 E Spa、時尚水療池、戶外親子戲水區，以及專為兒童規劃的兒童俱樂部等。斥資上億打造的夢之湖廣場，震撼的聲光水影絢麗舞動，更是戶外派對、時尚秀及浪漫婚禮舉辦的絕佳場地。飯店的兩間大型宴會廳各可容納 600 人，是大型聚會、活動的最佳選擇；其中全台首見挑高 21 公尺的皇家宴會廳，最適合舉行豪華的世紀婚禮。另有許多的多功能會議廳，可以根據賓客的不同需求而量身規劃會議，是各種演講、座談會、產品發表會及商務會議等活動的理想選擇。

E-DA ROYAL HOTEL is the only resort hotel with a shopping center, a theme park and boutique art in southern Taiwan. The Hotel has 656 guestrooms, 5 restaurants, 20 meeting and banquet rooms, a child club, a SPA, and Dream Lake with the only high-tech audio/video show in Asia.

The Hotel offers selections of rooms for different types of travelers. All rooms are with balcony, LCD TV, free WiFi/Internet access, and bathtub/shower bath. Guests who book a room with executive lounge will be provided with preferential services and amenities.

We have five restaurants. Heat'N Chill Buffet has wide selections of cuisine around the world; Royal Palace is famous for authentic Cantonese food; Casa Fontana is known for amazing Italian cuisine; Yanagi offers Japanese cuisine, and don't miss the Deli at Lobby out, where daily fresh bakery and deserts fill up your stomach.

The Hotel has a recreation area covering an area of about 6,700 square meters, including a fitness center, indoor and outdoor swimming pools, E-SPA, and a child club. Dream Lake offers the amazing video/audio show with reflection of water, making it the ideal place for parties, weddings and fashion shows.

There are two banquet halls that can accommodate 600 people each; Royal Banquet Hall, with a ceiling height of 21 meters, is an ideal venue for weddings. Moreover, we have more than 20 multi-function rooms with flexible layouts and configurations, perfectly for speeches, seminars, product releases, business conferences and so on.

地址 Address：840 高雄市大樹區學城路一段 153 號
No.153, Sec. 1, Xuecheng Rd., Dashu Dist., Kaohsiung City 840, Taiwan
電話 TEL：+886-7-6568111
網址 Website: <http://www.edaroyal.com.tw>





義大天悅飯店

E-DA SKYLARK HOTEL



設立日期 2007 年 10 月

員工人數 約 200 人

營業項目 住宿、餐飲、宴席、會議

Date of Establishment October, 2007

Number of Employees approximately 200

Services Accommodation, Food & Beverage, Banquet & Conference



天悅



義大天悅飯店 座落在義大世界園區內，飯店以英式新古典建築及典雅室內風格呈現。包含雅緻客房、溫馨家庭房、幸福家庭房、天悅家庭房等房型，還有以度假氛圍為主題的親子主題房，2021 年，義大天悅飯店並全新推出星悅尊榮家庭房房型，全館共計有 358 間客房。客房內大坪數空間搭配全景式觀景窗，將觀音山美景一覽無遺，旅人蒞臨義大天悅飯店，能盡情放鬆心情，享受難得的愜意時光。

義大天悅飯店共有多間美食餐廳與多功能宴會廳。義大百匯餐廳主打異國料理美食吃到飽，滿足老饕味蕾。優雅氛圍的天悅咖啡廳除提供特調咖啡、飲品外，另有主廚推薦套餐。喜悅食堂主打經典台式風味佳餚，提供小家庭合菜及用餐選擇。飯店另有三個多功能宴會廳，最多可容納 400 人，提供各式會議、產品發表會、時尚餐酒會與婚禮喜宴等特殊需求。2021 年，因應顧客需求，全新設計「星悅廳」宴客空間，4 間獨立式包廂，除專人服務強調隱私外，另可依照需求提供套餐或桌席料理。以親切的服務、全新完善的設備與美味的料理，提供消費者無論是家族聚餐或是商務餐敘的新選擇。

E-DA Skylark Hotel is located at E-DA World erected in English classic style. With a total of 358 guest rooms, we provide a selection of room types including deluxe room, family room, deluxe family room, and the latest renovated Skylark Deluxe family room for guests to choose from. All rooms are with balcony windows and magnificent garden view. Vacationers can find their ultimate relaxation by walking into the Hotel.

Why not go on a culinary vacation! Skylark Buffet offers exotic cuisine in all-you-can-eat style. Skylark Café offers various beverage and delicate snacks. Skylark Dining Booth is famous for Taiwanese food. There are three multi-function banquet halls that can accommodate up to 400 people. In 2021, a newly-decorated Skylark Lounge, with four private rooms, offers private dining experience without interference. Whatever you require catering service for a corporate event, a wedding or a dinner for family or friends, we will help you plan your gathering.

地址 Address：840 高雄市大樹區義大八街 100 號
No.100, E-DA 8 St., Dashu Dist., Kaohsiung City 840, Taiwan
電話 TEL：+886-7-6568000
網址 Website: <http://www.edaskylark.com.tw>





義大世界購物廣場

E-DA OUTLET MALL

- 開幕日期 2010 年 12 月
- 員工人數 約 180 人
- 櫃位數 400 櫃以上

- **Date of Opening** December, 2010
- **Number of Employees** approximately 180
- **Number of Shops** Over 400



義大世界購物廣場

為全國首創「品牌直營」Outlet Mall，室內迴廊式的購物空間搭配全台唯一以義大利特萊維 (Trevi) 噴泉為原型打造的「羅馬天幕許願池」，營造獨特歐式的購物氛圍。匯集國際精品、美式休閒、運動潮流、流行時尚、獨家品牌等多達 700 個品牌，全年提供 2 折起的超值優惠；除服飾配件外也打造居家生活大店，包含戶外用品、家用家飾、休閒生活等業態，集結美食餐廳與影城娛樂，創造「一站式購足」的全方位休閒購物體驗，並結合義大遊樂世界成為廣受歡迎的旅遊購物勝地。

E-DA Shopping Mall, Taiwan's premier outlet mall directly operated by brands, boasts an indoor promenade-style shopping area. To craft a distinctive European ambiance, it features the exclusive "Roman Sky Curtain" inspired by Italy's Trevi Fountain. Housing over 700 brands, including international high-end boutiques, American casual wear, sportswear, and trendy fashion labels, the mall offers year-round discounts starting from 80% off. Beyond apparel and accessories, the outlet mall presents a diverse range of home living stores, encompassing outdoor equipment & accessories, home decorations, and stores catering to leisure lifestyles. Complemented by entertainment options like gourmet restaurants, movie theaters and various indoor playgrounds for kids, E-DA Shopping Mall delivers an all-encompassing shopping and leisure experience. Paired with E-DA Theme Park, it has evolved into a widely sought-after shopping destination.

E-DA Shopping Mall, Taiwan's premier outlet mall directly operated by brands, boasts an indoor promenade-style shopping area. To craft a distinctive European ambiance, it features the exclusive "Roman Sky Curtain" inspired by Italy's Trevi Fountain. Housing over 700 brands, including international high-end boutiques, American casual wear, sportswear, and trendy fashion labels, the mall offers year-round discounts starting from 80% off. Beyond apparel and accessories, the outlet mall presents a diverse range of home living stores, encompassing outdoor equipment & accessories, home decorations, and stores catering to leisure lifestyles. Complemented by entertainment options like gourmet restaurants, movie theaters and various indoor playgrounds for kids, E-DA Shopping Mall delivers an all-encompassing shopping and leisure experience. Paired with E-DA Theme Park, it has evolved into a widely sought-after shopping destination.



義大世界購物廣場 E-DA OUTLET MALL
地址Address：840 高雄市大樹區學城路一段12 號
No.12, Sec. 1, Syuecheng Rd., Dashu District, Kaohsiung City 840, Taiwan, R.O.C.
熱線服務0800-656-080，貼心提供義大世界購物廣場精品品牌最新折扣訊息。
電話TEL：+886-7-6568100 網址http://www.edamall.com.tw





義大遊樂世界
E-DA THEME PARK

- 開幕日期 2010 年 12 月
- 員工人數 約 400 人
- 營業項目 主題樂園開發與經營

- **Date of Opening** December, 2010
- **Number of Employees** approximately 400
- **Services** Commercial development and theme park operation



義大遊樂世界 為全台唯一希臘情境式主題樂園，完整複製希臘藍白美景的「聖托里尼山城」，是遊客到訪必拍的熱門景點，而享譽全台的遊樂設施「極限挑戰」及「天旋地轉」，更讓遊客感受高度刺激及釋放壓力！

「特洛伊城堡」則重現木馬屠城記歷史場景，該區擁有 15,000 坪全台最大的親子室內遊樂館，還有多達 4 種主題的 VR 設施及暗室雲霄飛車；全新升級的「全台唯一飛行劇院」，能欣賞到台灣 19 處美景，彷彿置身其中。

義大遊樂世界多達 20 名舞者帶來國際級的舞蹈表演、精湛特技，更讓全台遊客慕名而來。在媲美國家級劇院的「義大皇家劇院」中，毫無冷場的精彩演出，戶外花車遊行更是不斷推陳出新、年年精彩。到義大遊樂世界能欣賞國際級大秀、搭乘刺激設施、拍攝絕美照片，一票玩到底，適合全家大小一同出遊。

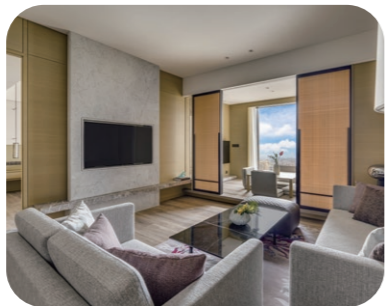
E-DA Theme Park, the only Greek-inspired amusement park in Taiwan, fully replicates the gorgeous Greek island of Santorini with its whitewashed, cube-shaped buildings adorned with Blue Accents. The Santorini Zone in the Park is a must-visit attraction and Instagrammable. Our best two rides are "Big Air" and "Booster," allowing visitors to feel the thrill and release stress high above.

"Troy Zone" perfectly reestablished the historic scene of Trojan War. The Zone is the largest parent-child indoor amusement park in Taiwan, covering a total area of 49,500 square meters. There are also a VR Station with four themes and a dark roller coaster. The most fascinating ride is "Taiwan Formosa," which is a 3-D motion simulator and allows guests to soar across the landscape of Taiwan.

E-DA Royal Theater provides amazing dance performances at an international level, attracting visitors across Taiwan. Our parades and shows are in a constant state of change to offer guests more value. With one ticket, you can enjoy the world-class performances, feel the thrills of loops and steep drops, and take photos of the gorgeous buildings in our Park. E-DA Theme Park is definitely worth visiting.

義大遊樂世界 E-DA THEME PARK
地址Address：840 高雄市大樹區學城路一段10 號
No.10, Sec. 1, Syuecheng Rd., Dashu District, Kaohsiung City 840, Taiwan, R.O.C.
客服專線 TEL：+886-7-656-8080
營業時間 Business Hours：9:00-17:30 (因應節日、季節不同，營業時間請依現場公告為準)
網址http://www.edathemepark.com.tw





設立日期 2020 年 12 月正式營運

員工人數 約 600 人

營業項目 住宿、餐飲、宴席、會議

Date of Establishment December, 2020

Number of Employees approximately 600

Service Accommodation, Food & Beverage,
Banquet & Conference

高雄萬豪酒店 為全台最大萬豪酒店，座落於於愛河地區，鄰近凹仔底森林公園。酒店距高雄國際機場僅 30 分鐘車程，與左營高鐵站距離約 15 分鐘車程，距捷運凹仔底站步行 5 分鐘，交通便利性極佳。

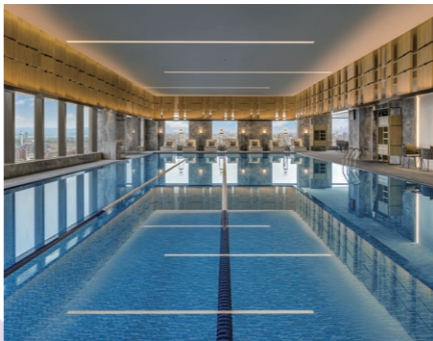
高雄萬豪酒店會議及宴會空間分佈於 8 樓、10 樓及 11 樓，總面積達 2,577 坪，稱霸南台灣；面積最大的萬享大宴會廳空間挑高、氣派華麗，面積約 847 坪可容納約 2,000 人；首創兩座戶外禮堂，滿足不同場合及宴會型態。

從 13 到 33 樓共 700 間客房，12 種不同房型，設計經典兼具現代風格。健身中心設有室內溫水游泳池、水療池以及維琪浴，幫助紓壓煥發身心。酒店提供多樣精緻美食，包括歐陸餐廳、頂級中、西、日式佳餚美饌，為賓客締造賓至如歸奢華體驗。

Kaohsiung Marriott Hotel is located within the area of Love River and Aozihdi Forest Park. We welcome you to explore the city including the accessibility of the hotel.

Encompassing 8,518 square meters of flexible space, the Hotel is an inspiring event venue. Spreading over 2,800 square meters, the Grand Ballroom accommodates as many as 2,000 guests. We also have a range of versatile spaces for events of any size including Apollo and Diana, two splendid sky gardens. A total of 700 guestrooms offer 12 room types in modern and spacious design. Take a dip in swimming pool, soothe your muscles with a hydro massage or enjoy a relaxing Vichy shower at the fitness center. Embark on a gastronomic journey to discover a wide array of gourmet offerings. Enjoy a marvelous experience and let your mind travel.

地址 Address : 804 高雄市鼓山區龍德新路 222 號
No. 222, Longdesin Rd., Gushan Dist., Kaohsiung City, Taiwan R.O.C.
電話 TEL : +886-7-5599111 網址 Website: <https://www.khhmarriott.com>





設立日期 2021 年 3 月

員工人數 約 250 人

櫃位數 約 400 櫃

Date of Establishment March, 2021

Number of Employees approximately 250

Number of Retailers approximately 400

義享時尚廣場 為北高雄經貿商圈全新型態購物中心，位於凹子底商圈擁有便捷的雙軌交通，鄰近富含人文氣息的愛河之心河畔，以當代時尚美學建築進行外觀設計，提供寬敞且充滿科技感的購物空間，為商場建築制定嶄新標桿。

商場營運為地下二層至地上七層，總營運面積約 2.5 萬坪，可容納多達 400 櫃入駐，以提供全新購物體驗之生活型態為經營方向，打造「全球時尚零時差國際精品大道」、「傲視全台食霸級美食新地標」及「富含生活美學的選物提案」等三大特色，匯集全球國際知名品牌設立複合旗艦老店、首創全台最大與歐美日韓即時連線的一站式購足美妝服務專門店、並引進同步日本藥妝、運動潮流複合專門店等，此外亦著重於親子育樂打造室內唯一互動式體驗場域，以全新多元的購物環境及優質貼心之服務，全方位滿足消費者，展現國際級水準之購物中心，成為南台灣最受矚目的全新地標。

E Sky Mall is a brand-new shopping center located in the central business district of Northern Kaohsiung, where convenient transportation system and the scenic Heart of Love River meets. We have a contemporary architectural style from the outside and a spacious yet hi-tech look from the inside, setting a new benchmark for shopping mall design.

The nine-storey shopping center accommodates up to 400 brands, covering an area of 82,645 square meters. Remarkable shopping & dining experiences are created here through a combination of international fashion boutiques, top-rated gourmet destinations, as well as other carefully curated brands, specialty stores and services to enhance life aesthetics. By consistently providing high quality services and a comprehensive shopping environment, E Sky Mall aspires to become a world-class shopping center and a new landmark in Southern Taiwan.

地址 Address：804 高雄市鼓山區大順一路 115 號

No.115, Dashun 1st Road, Gushan Dist, Kaohsiung City 804, Taiwan R.O.C.

電話 TEL：+886-7-5599888 網址 <http://www.esky-mall.com.tw>





設立時間	1998 年 10 月
編制人數	約 100 人
營業項目	新市鎮新社區開發業、住宅及大樓開發租售業、觀光休閒地產投資等
實績建案	義大世界別墅區一、二、三及五期
經營理念	本著一步一腳印，堅忍不拔之毅力，開拓每一吋土地，用心建築每一磚每一瓦，努力打造最優質居住環境。

Date of Establishment October, 1998

Number of Employees approximately 100

Main Services New Towns & New Communities Development, Residential and Commercial Real Estate Development, Tourism and Leisure Real Estate Investments.

Portfolio E-DA World Villa, ISU Dormitory, ISU International House.

Mission Statement By working steadily and making solid progress with perseverance, we strive to build high-quality living environment.

泛喬 股份有限公司為義聯集團地產及休閒事業體之核心成員，成立於 1998 年參與投資「高雄義大世界度假區」為全台最佳旅遊勝地，已開發完成義守大學宿舍大樓、義大國際學舍、義大世界別墅區、義大時尚一街、義大時尚二街、五星級義大皇家酒店及義大天悅飯店等商業不動產開發案。「義大世界」整體規劃設計匯集：頂級度假區、高級住宅區、優質文教區三大區塊…等多元化生活機能。

「義大世界別墅區」坐擁山林芬多精，綠意盎然美境，彷彿置身於歐洲小鎮的世外桃源，享受「高雄義大世界度假區」所提供的購物、美食、休閒、娛樂、度假、會展、人文、藝術、教育、養生等悠逸生活；規劃獨幢及雙併別墅，擁有精雕崗石外觀，其建築氣度宏偉，戶戶擁有專屬電梯，一樓氣派挑高 4.2 米，戶戶綠林庭園，處處彰顯豪宅氣度。

Eliter International Corporation (EIC) is one of the core members of E United Group, mainly focusing on recreational land development and real estate investment. Established in 1998, EIC also participated in the development of E-DA World, which is the best resort and recreation landmark in Taiwan. E-DA World consists of three major parts, namely recreational resorts, luxury residential zones, and high-quality education districts. Completed projects include I-Shou University Dormitory, I-Shou University International House (I and II), E-DA World Villa, Retail Street (I and II), E-DA Royal Hotel, E-DA Skylark Hotel and other commercial real estate development projects.

E-DA World Villa is surrounded by mountains and greenery, making residents feel as if they were in an European village. Residents can enjoy shopping, dining, leisure, entertainment, vacation, convention & exhibition, culture, art, education and wellness here. Each detached house is magnificent and erected with granite for exterior wall. The most striking features of the house are a home elevator, 4.2-meter-high ceilings and a landscaped patio.

地址 Address：840 高雄市大樹區學城路一段 9 號 3 樓
 3F., No.9, Sec. 1, Xuecheng Rd., Dashu Dist., Kaohsiung City 84048, Taiwan (R.O.C.)
 電話 TEL：+886-7-6567800
 傳真 FAX：+886-7-6567810
 網址 website：http://www.eliter.com.tw



未來展望 Prospects

不斷的創新與成長，是義聯集團永續經營的原動力。義聯集團擁有的跨國企業版圖，包括基礎工業的生產事業、深耕人文的教育事業、視病如親的醫療事業和提高生活品質的休閒娛樂事業，建構出涵蓋「教、用、養、樂」的全方位事業體系。

義聯集團深根於南台灣，放眼於全世界。將持續踩著沉穩踏實的步伐，以實際的行動、精益求精的態度及高效率的管理，創造出卓越穩健的企業體質，未來將強化國際行銷經營，並持續投資南台灣、繁榮地方經濟，為下一代的年輕人創造更多的就業機會，以縮短台灣南、北經濟發展，並引領著成長中的南台灣邁向發光發熱的未來。

義聯集團一步一腳印，持續落實 ESG（Environment, Social, Governance）永續經營，以樹立企業在社會中的價值，正踩踏出世界頂尖的競爭力與影響力，為台灣開創出更美好的未來邁進！

● MANUFACTURING

● EDUCATION

● MEDICAL SERVICES & HEALTH CARE

● REAL ESTATE & LEISURE BUSINESS

Continuous innovation and growth drive E United Group (EUG) to continue as a perpetual going-concern. EUG is a large and multinational business conglomerate, engaging in four business sectors. Our steel manufacturing, as the basic industry, tends to be crucial for the successful functioning of the economy and provides in-demand jobs. We also provide outstanding and high-quality education, and patient-centered healthcare business. Our real estate and leisure business improves the quality of life. We, thus, offer a full spectrum of business services covering learning, employment, healthcare and entertainment.

EUG is deeply rooted in Southern Taiwan and reaching out to the world. We continue to keep calm and carry on to become an extraordinary and solid corporate entity by practice, striving for improvement, and high-efficient management. In the future, EUG will strengthen to promote international marketing campaigns and continue to invest in Southern Taiwan, which expects to stimulate the local economy and more job opportunities will be created. We hope to minimize the economic inequality between South and North, and lead Southern Taiwan to a bright future.

EUG has been moving forward to carry on our business and embracing Environmental, Social, and Governance (ESG) principles in our operation. Our ESG-focused programme is inherently tied to our long-term positive value creation aligned with the needs of the community we serve. We are a world-class organization being able to compete in the global marketplace and ready to create a better future for Taiwan.



E UNITED GROUP



824高雄市燕巢區角宿里義大路6號

No.6, Yida Rd., Jiaosu Vil., Yanchao Dist., Kaohsiung City 824, Taiwan (R.O.C)

Tel: +886-7-6151111 Fax: +886-7-6154646

<http://www.e-united.com.tw>

2024.06